

LED water proof light

Installation and Operation Manual

Please read the following instructions carefully to ensure that mounting operation will be carried out in the right way .These instructions should be properly preserved for future reference.

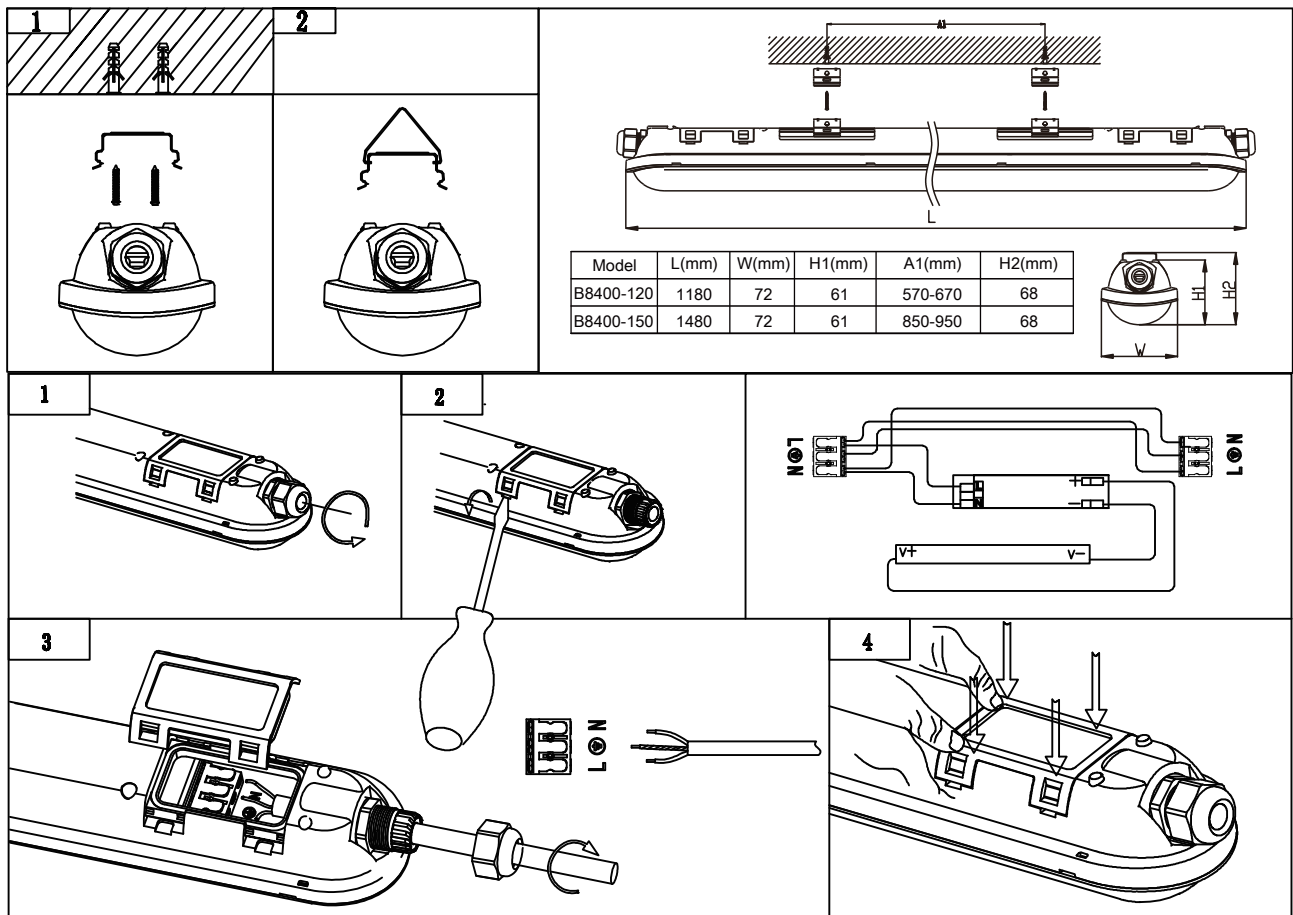
Specifications

Model no.	B8400-120BN	B8400-150BN	B8400-120SBN
Rated voltage	220-240V~	220-240V~	220-240V~
frequency	50/60Hz	50/60Hz	50/60Hz
Rated power	40W	55W	40W
protection class	I	I	I
protection	IP65	IP65	IP65

Safety tips

1. Use 3x1.5mm² rubber cable.
2. Luminaire should be installed by authorized electrician only acc. to national wiring rules. If the external flexible cable or cord of this luminaire is damaged, it shall be exclusively replaced by the manufacturer or his service agent or similar qualified person in order to avoid a hazard.
3. The power supply must be deactivated prior to assembly, maintenance, exchanging the bulb or cleaning processes. Remove the fuse or switch the fuse to OFF and secure from reactivation.
- 4.picture 1, screw the gland.
- 5.Use a screwdriver to open the box.
- 6.Connect brown wire(L) to terminal L, blue wire (N) to terminal N, connect the grounding wire and green/yellow fixture wire .
- 7.terminal box installed back, the terminal box must be installed the correct position.





Sensor Information

HF Frequency 5.8Ghz \pm 75M

Transmission power:<10mW.

Installation:Indoor ceiling;

Detection Range:360°

Detection Distance: max10m \pm 2m.

Time Setting:5sec/1min/3min/5min/10min.

Rated load:MAX. 1200W resistive load

400W inductive load

Ambient Light:2LUX、10LUX、25LUX、50LUX、disable

