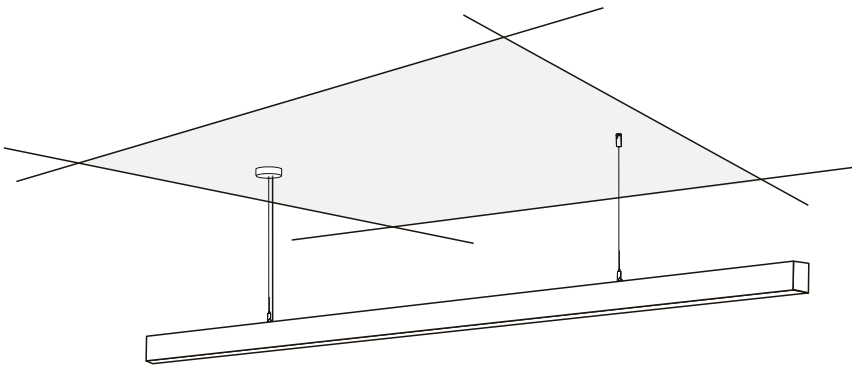


LINEAR SKYLIGHT
(For SKYLL Series)



BEFORE YOU BEGIN

Read these instructions completely and carefully

⚠ WARNING/AVERTISSEMENT

RISK OF ELECTRIC SHOCK

- Turn power off before inspection, installation or removal.
- Properly ground electrical enclosure.

RISK OF FIRE

- Follow all NEC and local codes.
- Use only UL approved wire for input/output connecions. Input wire minimum size is 18 AWG, and the output wire minimum size is 24 AWG

RISQUES DE DÉCHARGES ÉLECTRIQUES

- Coupez l'alimentation avant d'inspecter, installer ou déplacer le luminaire.
- Assurez-vous de correctement mettre à la terre le boîtier d'alimentation électrique.

RISQUES D'INCENDIE

- Respectez tous les codes NEC et codes locaux.
- N'utilisez que des fils approuvés par UL ou IEC pour les entrées/sorties de connexion. Taille minimum 18 AWG (0.75mm²).

Prepare Electrical Wiring

Refer to PL Series LED Panel Specification for more lamp
electronical data info.



Electrical Requirements

- The LED luminaire must be connected to the mains supply according to its ratings on the product label.



Grounding Instructions

- The grounding and bonding of the overall system shall be done in accordance to local electric code of the country where the luminaire is installed.

Save These Instructions

Use only in the manner intended by the manufacturer.
If you have any questions, contact the manufacturer.

⚠ CAUTION

Do not perforate the integrity of the luminaire. Only screw into the threaded mounting bracket holes located at the four corners of the fxture.

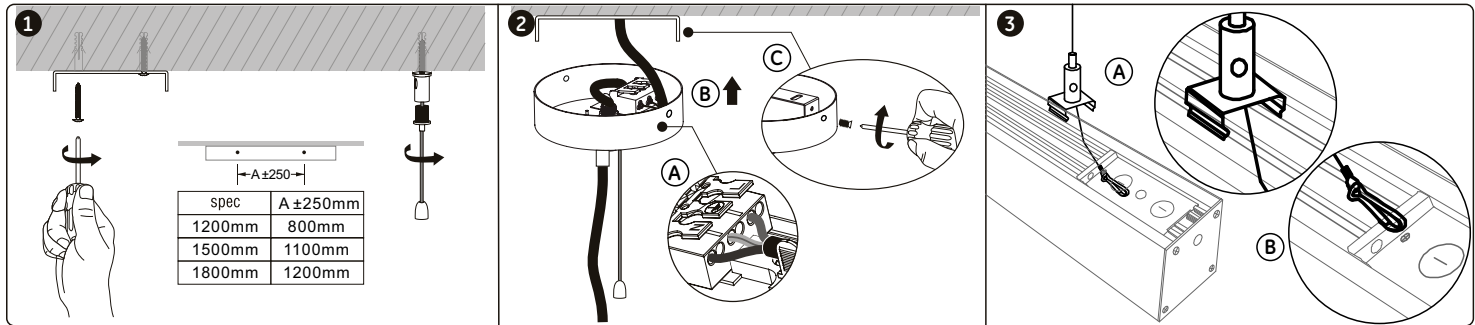
⚠ WARNING/AVERTISSEMENT

Risk of Fire. Do not install insulation within 3 inches (76 mm) of luminaire top.
Risques d'incendie. Ne pas installer d'isolation à moins de 76 mm (3 pouces) au-dessus du luminaire.

Storage Info

Environmental Operating Temperature Range	-10°C to +40°C
Environmental Rating	Dry or damp location rated
Environmental Storage Temperature Range	-40°C to +60°C

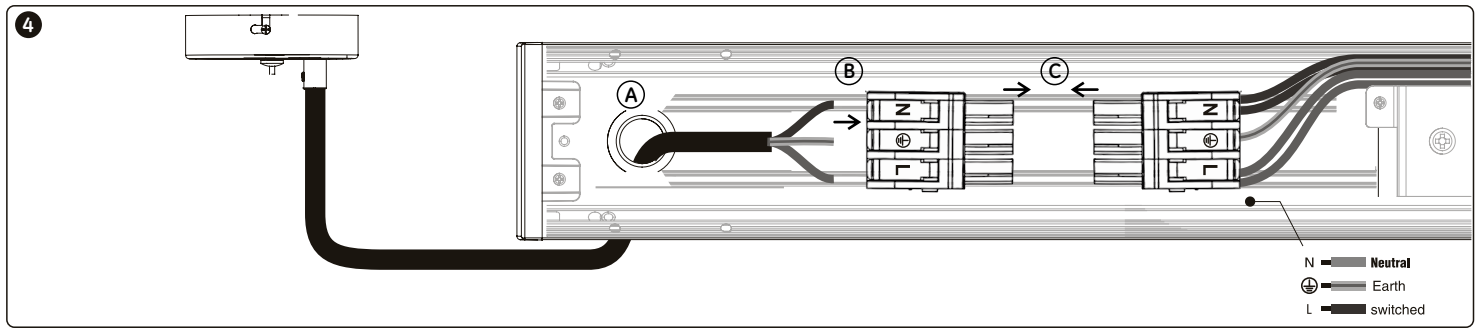
Installation Steps



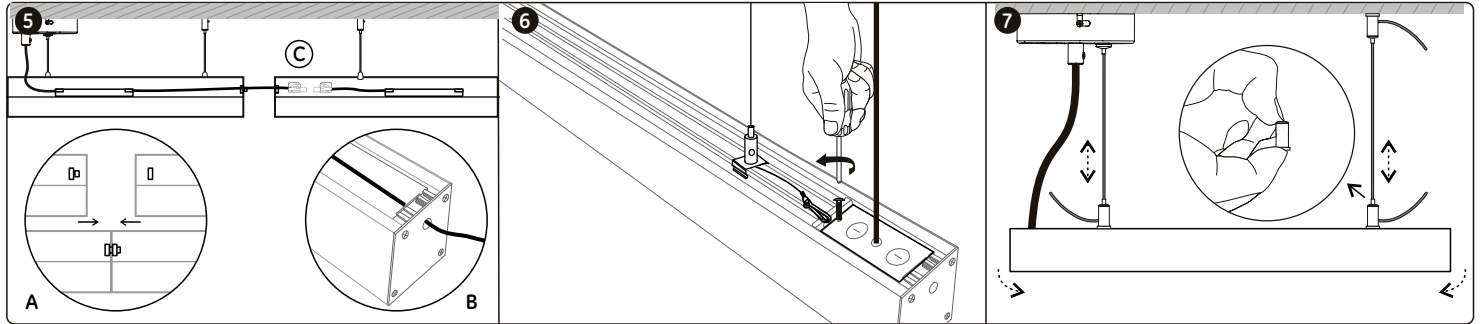
Install the ceiling bracket to the ceiling.
And according to the size of the lamp, keep the
distance of 2 fixed points.

A. Connect the cable to the terminal.
B. Insert the round ceiling plate into the bracket.
C. Lock the screws.

A. Fasten the stainless steel shrapnel to the lamp.
B. Fasten the safety hook into the safety hole,
as shown in the figure above.



A. Insert the cable into the power hole. B. Insert the terminal into the cable. C. Insert terminals.

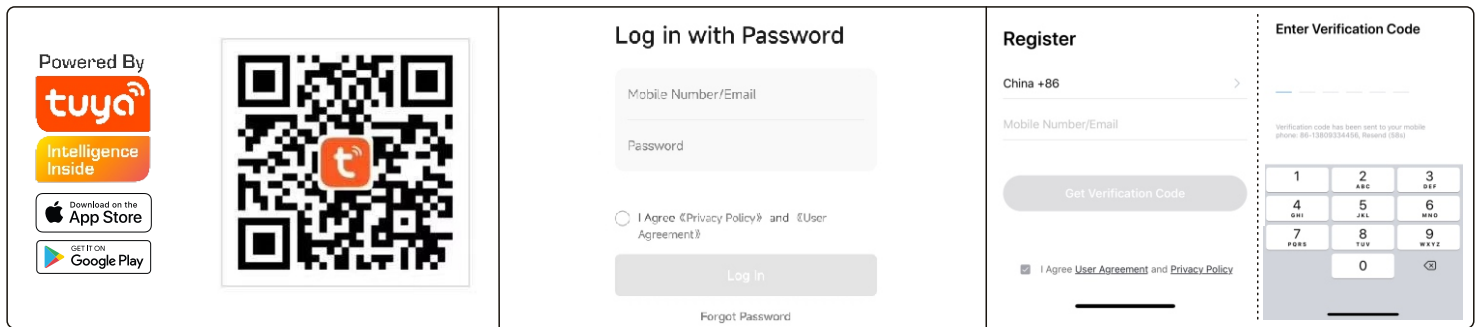


Splicing diagram, A. Connect 2 lamps with nuts. B. Cross the wire. C. Insert the terminal.

Fixed power supply cover

Adjust the rope length to achieve the required installation height and balance the luminaire.

APP Installation

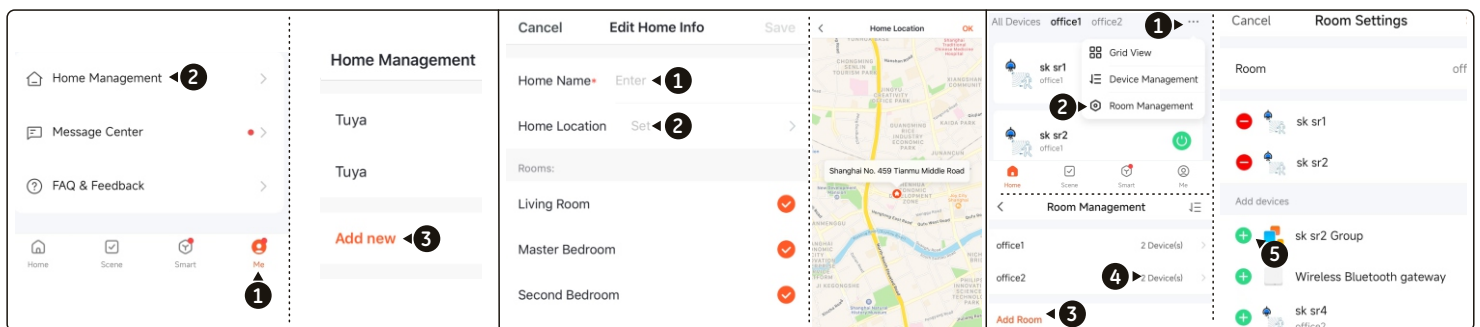


Download the app by searching for "Tuya Smart" in APP stores or scanning the following QR code.

Log in account.

If do not have an account, and need to register a new account.

Project Create

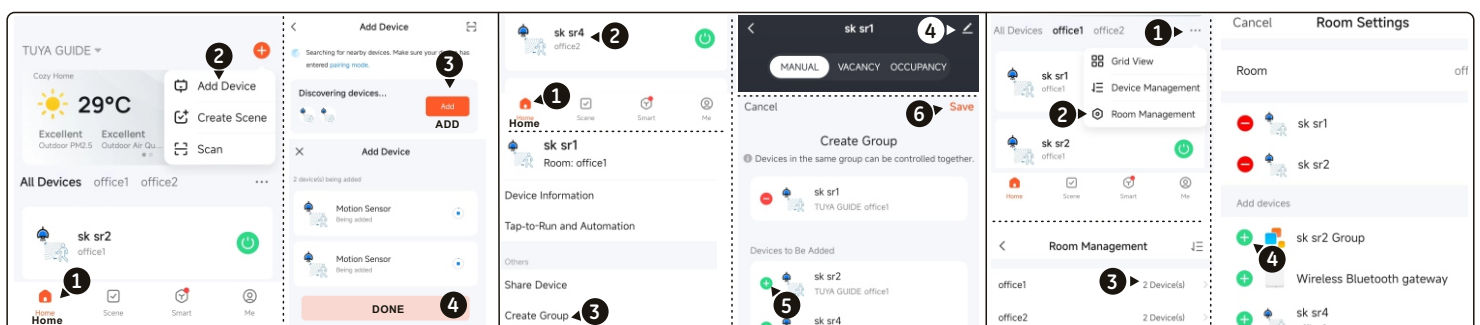


Create "Project" (which called "home" in TUYA APP).

Enter the project name and address.

Add rooms, and move devices / groups to the room.

Add Devices



Adding devices, zone by zone. Zoning, based on the range of each switch. **WIFI network is required.**

Create a group. After created, we can control multiple devices at a time.

Remove devices by APP.