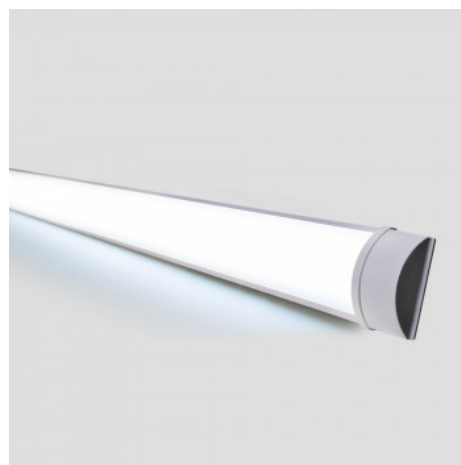


High-power LED linear luminaire - 45W - 150cm - 4000K - IP20

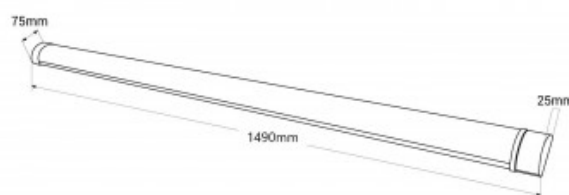
Ref. B8411-150

High-power LED linear luminaire, 150 cm long, ideal to replace traditional fluorescent tubes, as it combines quality with substantial energy savings. It features a power of 45W, providing ample brightness evenly distributed thanks to its opal diffuser. Available in neutral white (4000K) and cool white (6500K). **Included: screws and set of fixing clips**





Product data

| | |
|-------------------------|---------------------------|
| Hue | Cool white, Neutral white |
| Kelvin (K) | 4000, 6500 |
| Lumens (Lm) | 4850 |
| CRI | 80-85 |
| Beam angle (°) | 120 |
| LED Type | SMD 2835 |
| Dimmable | No |
| Power (W) | 45 |
| Nominal Voltage (V) | 220 - 240 V/AC |
| Sensor | No |
| Orientable | No |
| Dimensions (mm) Lxlxh | 1490 x 75 x 25 |
| Material | Polycarbonate |
| Diffuser material | Polycarbonate |
| Use Outdoor | No |
| IP | IP20 |
| Lifetime (h) | 15000 |
| Energy efficiency class | F |



| | |
|--------------|---------------------------------------|
| Certificates | CE, ROHS |
| Warranty | According to legal guarantee: 2 years |
| Mounting | Surface |

Product variants

| Reference | Attributes | |
|--------------|------------------------------------|---|
| B8411-150-BF | Colour temperature - Cool White |  |
| B8411-150-BN | Colour temperature - Neutral White |  |