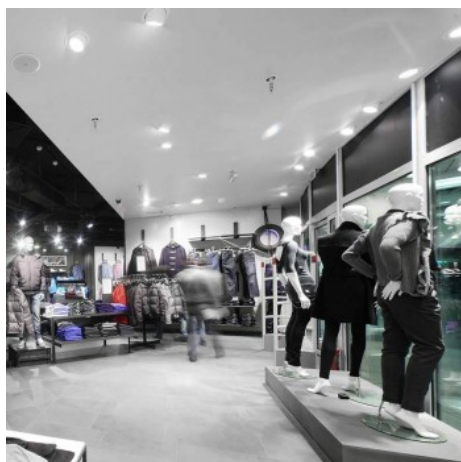




38W  
LED  
CCT  
SYSTEM  
3000K-4000K-5000K



## Downlight LED circular tilting downlight 38W CCT driver LIFUD

### Ref. B1262-1-38

38W circular LED downlight with SMD2835 LED chip. Direct connection to 230V. In white color. Fully addressable (Rotable and tilting). Ideal for bathing walls in shop windows, showcases, donkeys, counters...Replaces metal halide lamps up to 150W.



### Product data

Hue	Cool white, Neutral white, Warm white
Kelvin (K)	3000, 6000, 4000
Lumens (Lm)	3640
CRI	80-85
UGR	No
LED Type	SMD 5630
Dimmable	No
Nominal Voltage (V)	230
Frequency (Hz)	50-60
Power factor (cosφ)	0,95
Sensor	No
Orientable	Yes
Dimensions (mm) LxLxh	Ø195x180
Material	Plastic
Diffuser material	IP20
Use Outdoor	No
IP	IP20
Temperature range	-20°C ~ +40°C

Chip Samsung SMD2835  
Giratorio: 60°  
Corte: Ø170mm



Frequency of use	Intensive
Lifetime (h)	35000
Energy efficiency class	A+
Certificates	CE, ROHS
Warranty	3 years
Cutting dimensions (mm)	Ø170
Mounting	Recessed

## Product variants

Reference	Attributes	
B1262-38CCT	Colour temperature - CCT	