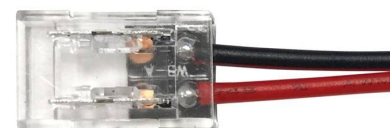
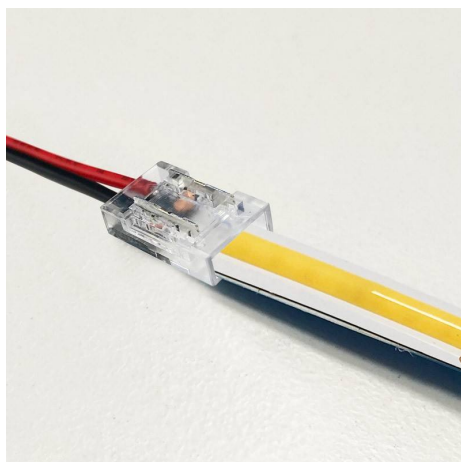
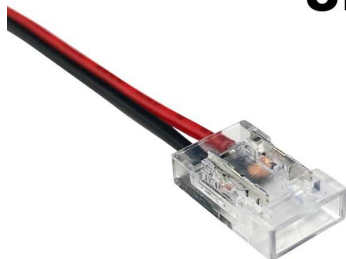


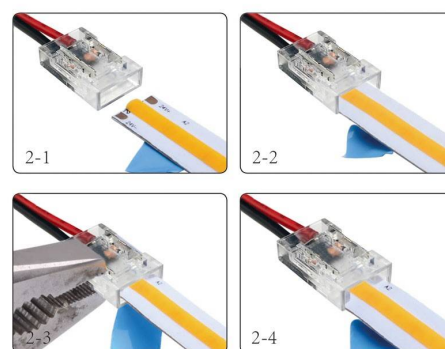
**8mm**



## Connector for starting 8mm single-color COB LED strips

### Ref. G-A2P-8

Starter connector cable for 8mm single color LED strips. Connects single-color LED strips to the corresponding controller. Allows to use cut sections of the single-color LED strips without soldering, very easily. Suitable for both COB and SMD single-color LED strips. Degree of protection IP20, for indoor use only. Connector of strip to current. 0/36V-DC. 5A. With Black-Red central cable and a length of 150mm. 2 Pin. 8mm.



## Datos del producto

Nominal Voltage (V)	0-36V-DC
Dimensions (mm) LxIxh	164x10x4
Material	Polycarbonate
Use Outdoor	No
IP	IP20
Temperature range	-20°C ~ +40°C
Frequency of use	Intensive
Certificates	CE, ROHS
Warranty	According to legal guarantee: 2 years
Track width (mm)	8
Control system	Monocolor

