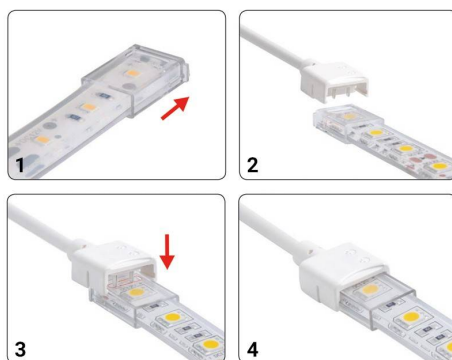


RGB 10mm



Connector start strip to cable RGB PCB 10mm IP68

Ref. SDN10XB-4W200

RGB strip to cable starterconnector for RGB LED Strips. The strip-to-cable starter connector allows connection and disconnection of RGB LED strips to the corresponding controller or source. Quickly and easily connects lengths of RGB LED strips. RGB strip to 10mm wide cable. Strip to power connector. Totally waterproof, IP68 protection degree. With a total length of 200mm. 4 Pin. 5A. 3/24V-DC. Use for outdoor and indoor, for individuals and professionals.

Datos del producto

Nominal Voltage (V)	12/24V-DC
Dimensions (mm) LxIxh	28x17.5x8.5
Material	PC; ABS; PVC
Use Outdoor	Yes
IP	IP68
Temperature range	-20°C ~ +40°C
Frequency of use	Intensive
Certificates	CE, ROHS
Warranty	According to legal guarantee: 2 years
Track width (mm)	10
Control system	RGB
Maximum intensity (A)	5