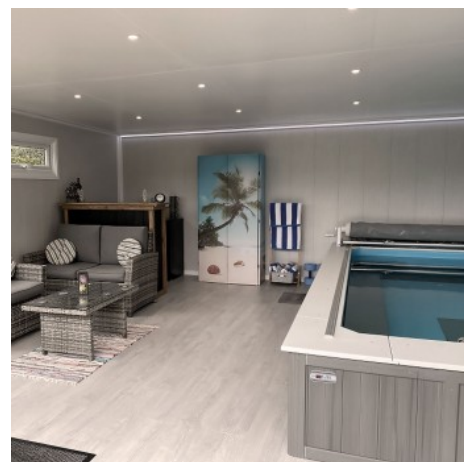




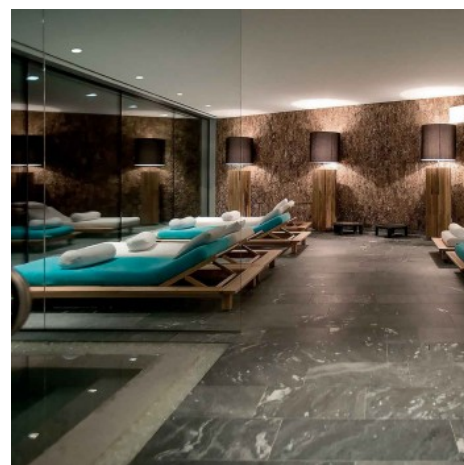
8W  
IP65  
90lm  
LED



## Waterproof recessed LED downlight - IP65 - 8W - Cut Ø 80-95mm

### Ref. B1220

This waterproof LED downlight has 8W power and 90 lm/W efficiency. Due to its IP65 protection rating, it is specially designed for environments that require high protection against water, such as bathrooms, saunas, swimming pool areas, etc. Available in warm white (3000K), neutral white (4000K) and cool white (6000K). Its installation is very simple and it is suitable for both domestic and professional use.






### Product data

Hue	Cool white, Neutral white, Warm white
Kelvin (K)	3000, 6000, 4000
Efficiency (Lm/w)	90
CRI	80-85
Beam angle (°)	140
LED Type	SMD 2835
Power (W)	8
Nominal Voltage (V)	220 - 240 V/AC
Frequency (Hz)	50 - 60
Dimensions (mm) LxH	Ø105 x 70
Material	Polycarbonate
Use Outdoor	Yes
IP	IP65
Certificates	CE, ROHS
Cutting dimensions (mm)	Ø80-95mm
Mounting	Recessed



Product variants

Reference	Attributes	
B1220-BC	Colour temperature - Warm white 3000K	 <p>8W IP65 LM70</p>
B1220-BN	Colour temperature - Neutral white 4000K	 <p>8W IP65 LM70</p>
B1220-BF	Colour temperature - Cool white 6000K	 <p>8W IP65 LM70</p>