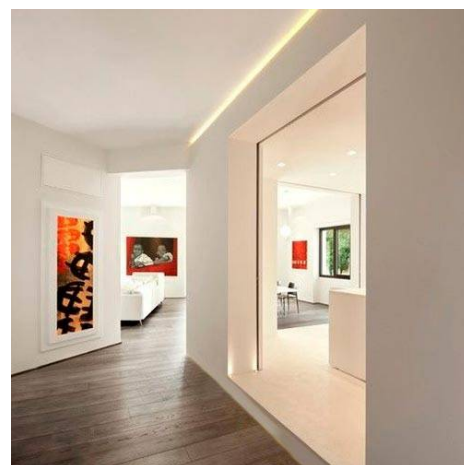


Plaster/Pladur 46x26 Inside Corner Integration Profile (2m)

Ref. BPERFALP069

The aluminum profile of integration of 46x26mm of 2 meters. It is installed on the ceiling or plaster/plasterboard wall. It allows a linear illumination, it is perfect for interior lighting of corners and nooks. Includes opal diffuser. It offers an innovative lighting solution with LED strips with a maximum width of 10mm. Can be painted in any color. Creates infinite architectural and interior lighting solutions. Typically used for corner and wall lighting, recessed linear lighting. 46x26mm Length: 2m Material: Aluminum Can be painted in any color For flexible or rigid LED strips of <10mm Compatible with covers ref. BTPEC068R



Datos del producto

Dimensions (mm) LxIxh	2000x46x26
Material	Aluminium
Use Outdoor	No
IP	IP20
Certificates	CE, ROHS
Warranty	According to legal guarantee: 2 years
Mounting	Recessed

