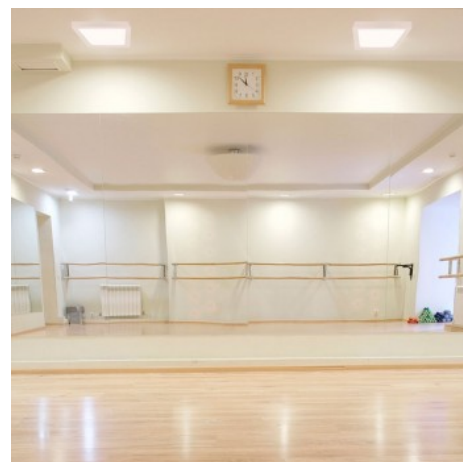
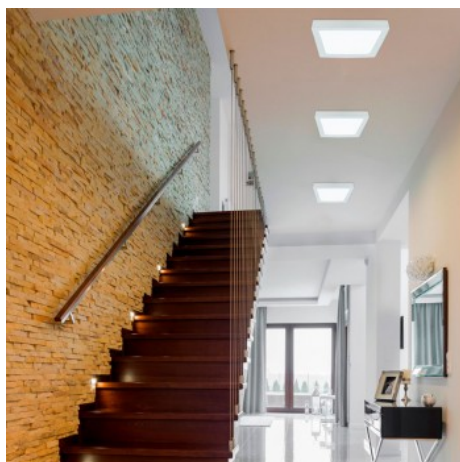




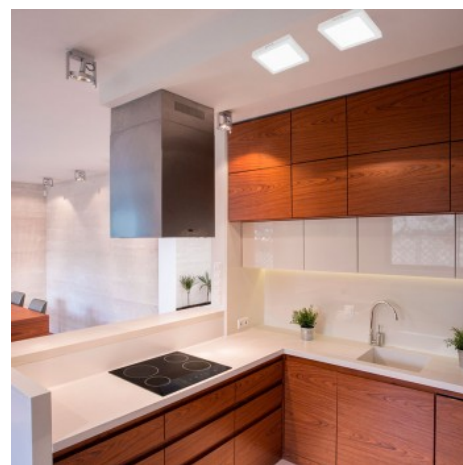
18W
CRI >80
LED
IP20
100 lm/W
CHIP
SMD 2835



Square LED Ceiling Lamp 18W High Efficiency

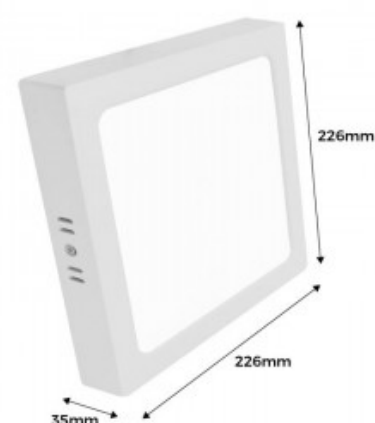
Ref. B1030

Surface mounted LED ceiling light with a square shape and a power of 18W. Modern and minimalist design with dimensions of 226x226x35mm. Made of polycarbonate with white emebellecedor. Homogeneous and intense light, thanks to the opal polycarbonate diffuser. The DOB offers a high efficiency LED ceiling light with a luminous efficiency of 100lm/W, low consumption, no noise and no flicker. Beam opening angle of 120 degrees. Ideal LED luminaire for both professional and private use. Very homogeneous general lighting in any indoor room. Perfect choice for homes, offices, restaurants, etc. ✓ 18W ✓ 230V ✓ 120° ✓ IP20






Product data

Hue	Cool white, Neutral white, Warm white
Kelvin (K)	3000, 6000, 4000
Lumens (Lm)	1800
Efficiency (Lm/w)	100
CRI	80-85
LED Type	SMD 2835
Dimmable	No
Nominal Voltage (V)	230
Orientable	No
Dimensions (mm) LxLxh	226x226x35
Material	Polycarbonate
Diffuser material	Polycarbonate
Use Outdoor	No
IP	IP20
Temperature range	-20°C ~ +40°C
Frequency of use	Normal
Lifetime (h)	25000
Energy efficiency class	A+ (2021)



Certificates	CE, ROHS
Warranty	According to legal guarantee: 2 years
Mounting	Surface

Product variants

Reference	Attributes	
B1030-B-18W-BF	Colour temperature - Cool White	 <p>18W CRI >80 100lm/W 2700K 50000h IP20</p>
B1030-B-18W-BN	Colour temperature - Neutral White	 <p>18W CRI >80 100lm/W 2700K 50000h IP20</p>
B1030-B-18W-BC	Colour temperature - Warm White	 <p>18W CRI >80 100lm/W 2700K 50000h IP20</p>