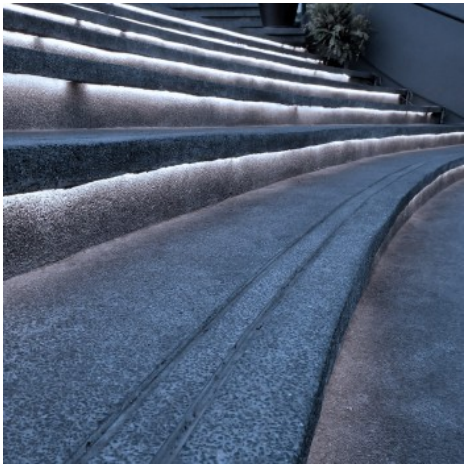


LED Strip 220V - 380W (2400xSMD2835) - 12mm - Suitable for outdoor use: IP67 - 20 meter roll

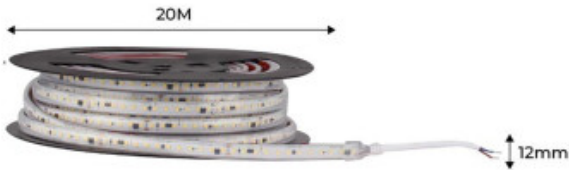
Ref. B1540

LED strip 220V suitable for outdoor use in roll of 20 meters. It connects directly to the electric current without the need of transformer or rectifier. It incorporates high quality SMD2835 LED chips with a density of 120 chips/meter, giving it a total power of 380W and a high luminous intensity of 35720 lumens. It has the possibility of making cuts every 10 cm, making it very versatile for different lighting projects. Its great flexibility allows it to adapt to almost any surface and it is also suitable for outdoor use thanks to its high degree of protection: IP67, which protects it from external factors such as rain, dust or humidity. It has a beam opening angle of 180° and a high color rendering index (CRI>90), which allows it to reproduce colors faithfully, similar to natural light. Available in warm white (2700K), neutral white (4000K) and cool white (6000K). Due to its characteristics, it is ideal for installation in places where high brightness is required.



Product data



Hue	Cool white, Neutral white, Warm white
Kelvin (K)	6000, 4000, 2700
Lumens (Lm)	32600, 35720
Efficiency (Lm/w)	96
CRI	90-95
Beam angle (°)	180
LED Type	SMD 2835
Power (W)	380
Nominal Voltage (V)	220 - 240 V/AC
Frequency (Hz)	50 - 60
Use Outdoor	Yes
IP	IP67
Temperature range	-20°C ~ +40°C
Frequency of use	Normal
Certificates	CE, ROHS
Warranty	According to legal guarantee: 2 years
Power/m (W/m)	19
No. of chips/metre	120



Adhesive

3M

Product variants

Reference	Attributes	
B1540-BN	Colour temperature - Neutral white 4000K	
B1540-BF	Colour temperature - Cool white 6500K	
B1540-270	Colour temperature - Warm white 2700K	