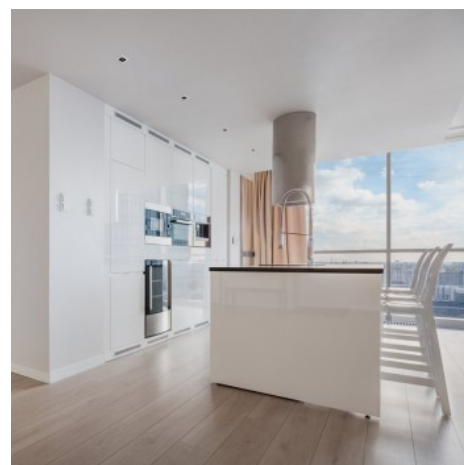


Recessed linear LED downlight - 2W - UGR18 - CRI90 - OSRAM Chip

Ref. B1210

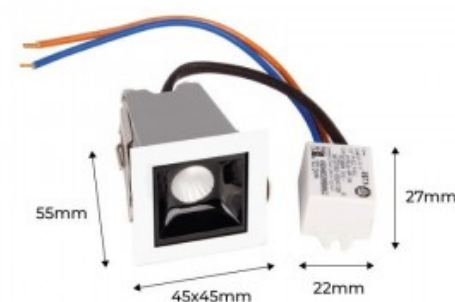
Recessed linear LED downlight composed of a 2W power spotlight. It incorporates Osram LED chips and KeGu driver. It stands out for its low glare index (UGR<18) and high color rendering index (CRI>90). Available in 2 colours: white and black, and in 2 colour temperatures: warm white (2700K) and neutral white (4000K). **Cutout dimensions: 37x37mm**



Product data

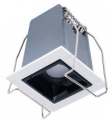

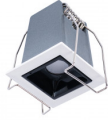
Hue	Neutral white, Extra warm white
Kelvin (K)	4000, 2700
Lumens (Lm)	warm white: 159lm - neutral white: 135lm
CRI	90-95
Beam angle (°)	45°
UGR	UGR18
LED Type	Chip OSRAM
Dimmable	No
Power (W)	2
Nominal Voltage (V)	220 - 240 V/AC
Frequency (Hz)	50 - 60
Driver	External, KeGu
Sensor	No
Orientable	No
Dimensions (mm) LxLxh	45x45 mm
Material	Aluminium
Diffuser material	Polycarbonate
Use Outdoor	No

① 37x37mm



IP	IP20
Energy efficiency class	F
Certificates	CE, ROHS
Warranty	According to legal guarantee: 2 years
Cutting dimensions (mm)	37x37mm
Mounting	Recessed

Product variants

Reference	Attributes	
B1218-2W-B-BN	Colour - White,Colour temperature - Neutral White	
B1218-2W-N-BN	Colour - Black,Colour temperature - Neutral White	
B1210-B-BC	Colour - White,Colour temperature - Warm White	
B1210-N-BC	Colour - Black,Colour temperature - Warm White	