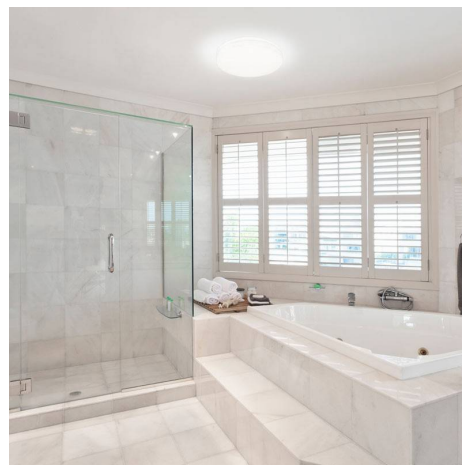


## 2040LM 18W IP65 circular surface mounted LED ceiling light 2040LM 18W IP65

### Ref. B1725-R-CCT

Ceiling CCT of circular surface LED of 18W of power, of easy installation. Reduced dimensions and high luminous efficiency with a really low consumption. Its IP65 rating makes it suitable for installation in bathrooms and wet areas, as well as in covered exteriors, as it withstands moisture and splashes. In addition, its degree of watertightness prevents insects, dust and dirt from penetrating. 18W 230V 2040LM Ø280x50mm IP65



### Datos del producto

Hue	Cool white, Neutral white, Warm white
Kelvin (K)	3000, 4000, 6500
Lumens (Lm)	2040
Efficiency (Lm/w)	106
CRI	80-85
Opening angle (°)	120
LED Type	SMD 2835
Dimmable	No
Nominal Voltage (V)	230
Frequency (Hz)	50 - 60
Driver	Internal
Sensor	No
Orientable	No
Dimensions (mm) LxIxh	Ø280x50
Material	Plastic
Diffuser material	Polycarbonate
Use Outdoor	Yes
IP	IP65



## LED Flush Fitting Ceiling Lights

Temperature range	-20°C ~ +40°C
Frequency of use	Normal
Lifetime (h)	25000
Energy efficiency class	A+ (2021)
Certificates	CE, ROHS
Warranty	According to legal guarantee: 2 years
Mounting	Surface