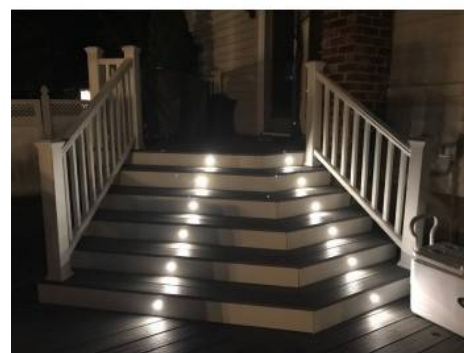


LED ground recessed beacon spotlight 0.5W 12V-DC IP67

Ref. BA50010

Ground recessed beacon IP67 Ø60x29,5mm 0,5W (6 SMD3350) 12V-DC with waterproof connector, made of stainless steel and opal polycarbonate, emits light in warm white, cold white or blue (depending on the model chosen).LED for signaling/decoration. Requires 12V-DC power supply (not included).12VDC - 0,5WØ60x29,5mm×Ø53IP67





Product data

Hue	Cool white, Warm white, Blue
Kelvin (K)	3000, 6000
Lumens (Lm)	7
Beam angle (°)	120
LED Type	SMD 2835
Dimmable	Yes
Power (W)	0,5
Nominal Voltage (V)	12V-DC
Frequency (Hz)	50 - 60
Driver	Not included
Dimensions (mm) LxLxh	Ø60x29,5
Material	Stainless steel
Diffuser material	Polycarbonate
Use Outdoor	Yes
IP	IP67
Temperature range	-20°C ~ +40°C
Frequency of use	Normal
Lifetime (h)	25000

Energy efficiency class	A+ (2021)
Certificates	CE, ROHS
Warranty	According to legal guarantee: 2 years
Mounting	Recessed

Product variants

Reference	Attributes	
BA50010-BC	Colour temperature - Warm White	
BA50010-AZ	Colour temperature - Blue	
BA50010-BN	Colour temperature - Neutral White	