



CAUTION

- ⓘ **INDOOR USE ONLY**
- ⓘ Don't expose lamps to rain or wet conditions. Water entering the switch or socket will increase the risk of electric shock.
- ⓘ Don't abuse the cord. Never use the cord to carry things or pull the plug from the receptacle. Keep cord away from heat, oil sharp edges or moving parts. Damaged cords will increase the risk of electric shock.
- ⓘ Put the marble base on a horizontal ground. Make sure the stability before assemble the lamp. Don't sit or stand on the marble.
- ⓘ Disconnect the plug from the power source before make any adjustments, changing accessories or storing the lamp.
- ⓘ Wear the gloves before assembling the lamps. And keep away the lamp from any salt to avoid rust.
- ⓘ Use the lamp at AC voltage 220V. Over-loaded will increase the risk of fire.
- ⓘ Use the incandescent bulb Not more than 60Watt or LED bulbs.



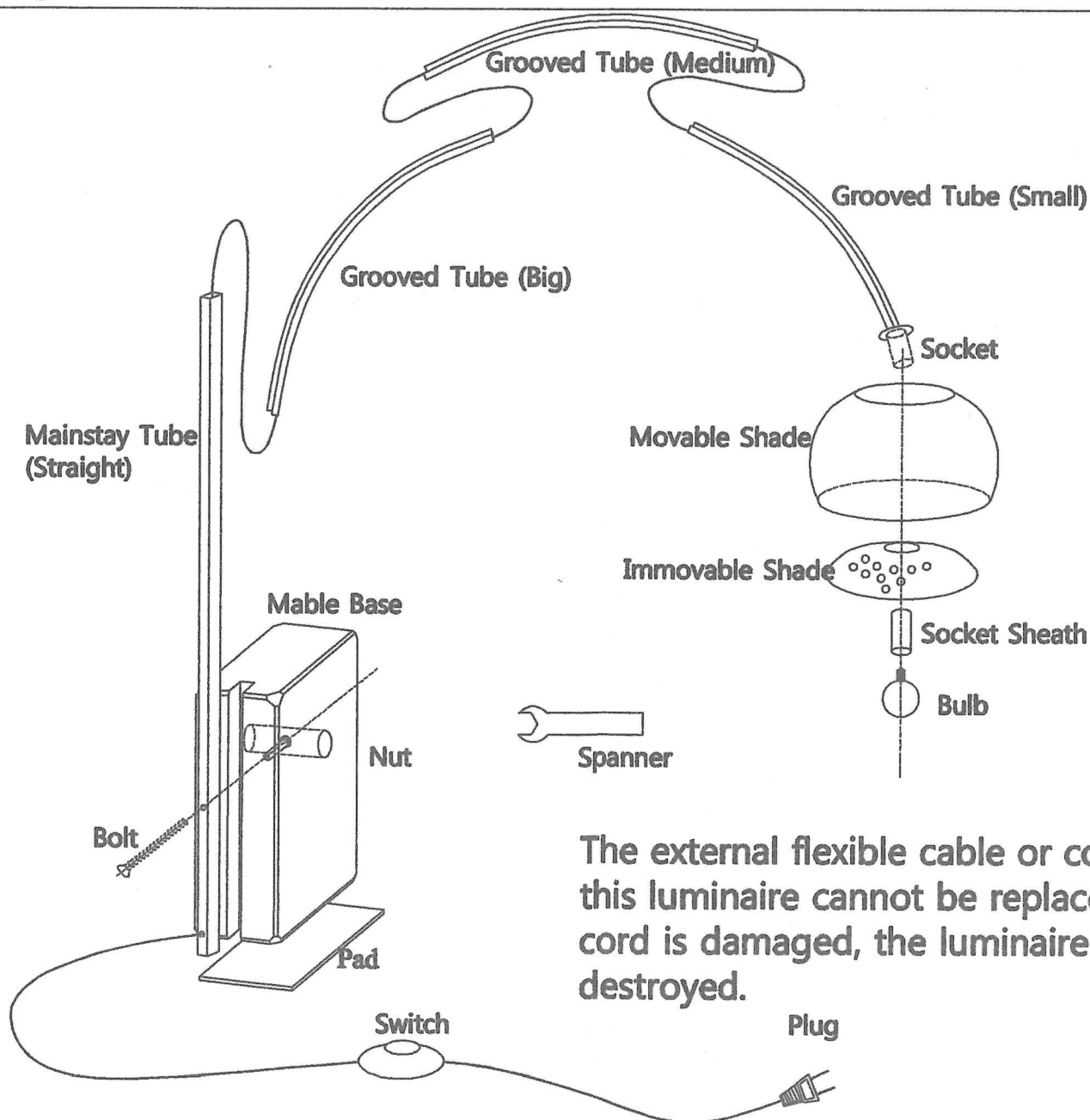
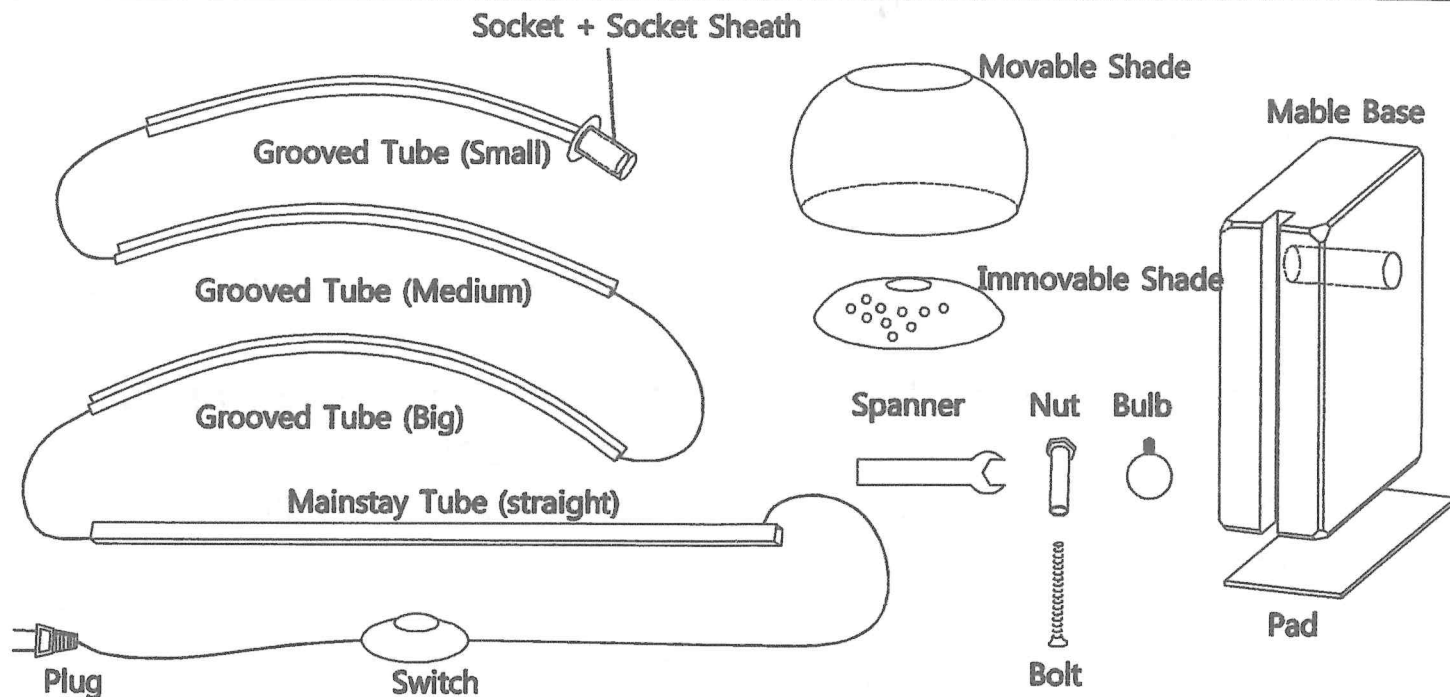
CONTENTS:

| Package | Part Name | Quantity |
|---------|--------------------------|----------|
| 1 | Marble Base(Nut +Bolt) | 1 |
| 2 | Mainstay Tube(Straight) | 1 |
| | Grooved Tube(Big) | 1 |
| | Grooved Tube(Medium) | 1 |
| | Grooved Tube(Small) | 1 |
| | Cord with Plug & Switch | 1 |
| | Socket+Socket Sheath | 1 |
| | Gloves | 1pair |
| | Spanner | 1 |
| 3 | Pad | 1 |
| | Movable Shade | 1 |
| | Immovable Shade | 1 |
| | E27 5Watt 4000K LED Bulb | 1 |

Floor LAMP

Assembly Instructions

2



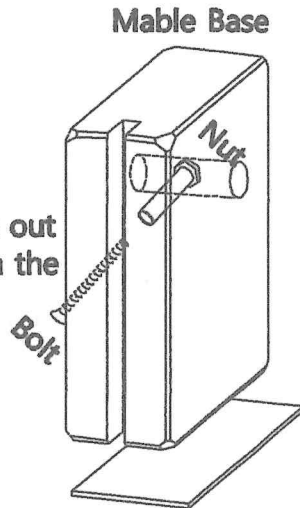
The external flexible cable or cord of this luminaire cannot be replaced; if the cord is damaged, the luminaire shall be destroyed.

Floor LAMP

Assembly Instructions

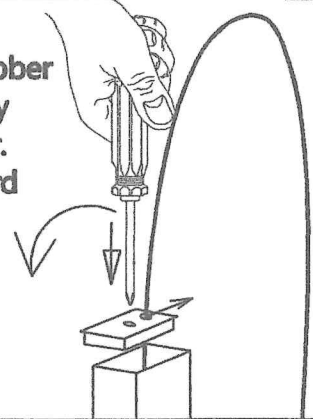
3

Step 2: Turn and take out the bolt from the marble

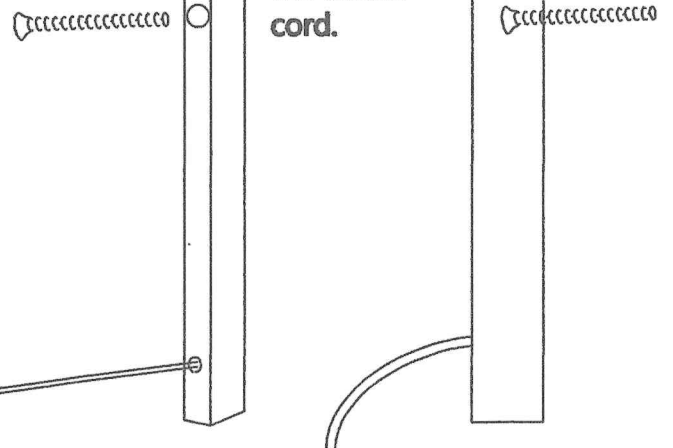


Step 1: Clean the bottom of the marble and Stick the Pad

Step 3: Take off the rubber away from the mainstay tube with a screwdriver. Then take it off the cord along the crack

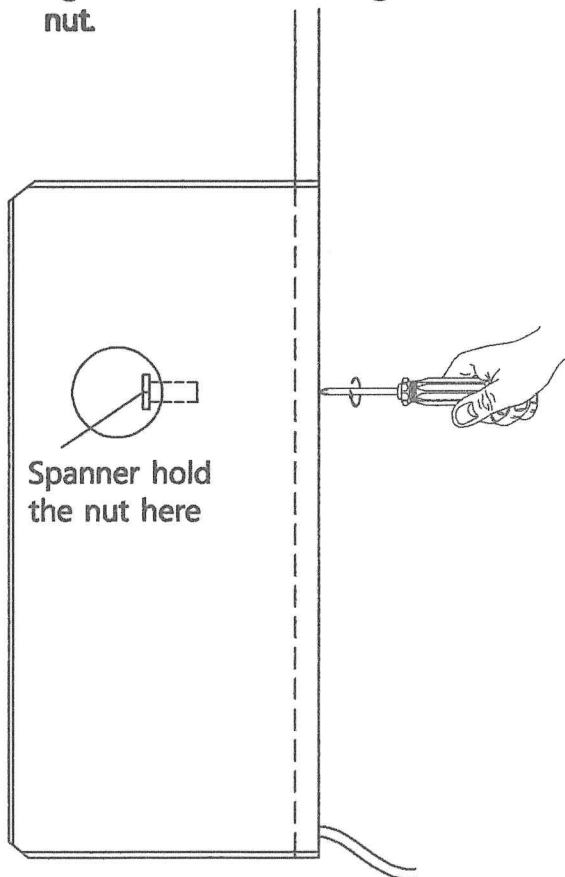


Step 4: Insert the bolt into the hole same side to the outlet cord.

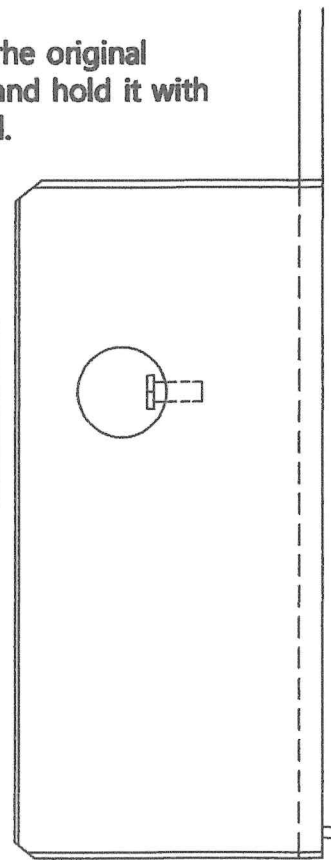
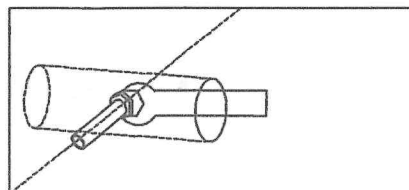


Step 6:

Put the mainstay tube into the slot on the marble, with the outlet cord outside, Screw on the bolt to the nut slowly and pull the cord constantly to make sure the cord is not pressed by the bolt. If the cord is pressed, please loose the bolt and redo it again until the bolt is tight to the nut.



Step 5: Put the nut back to the original place in the marble and hold it with the spanner attached.



Step 7:

Inset the Big Groove tube into the top of the mainstay tube. Make sure the clip is in the right place

Step 9:

Insert the Small grooved tube into to Medium one , Make sure to fix in the right positions to hold to tube.

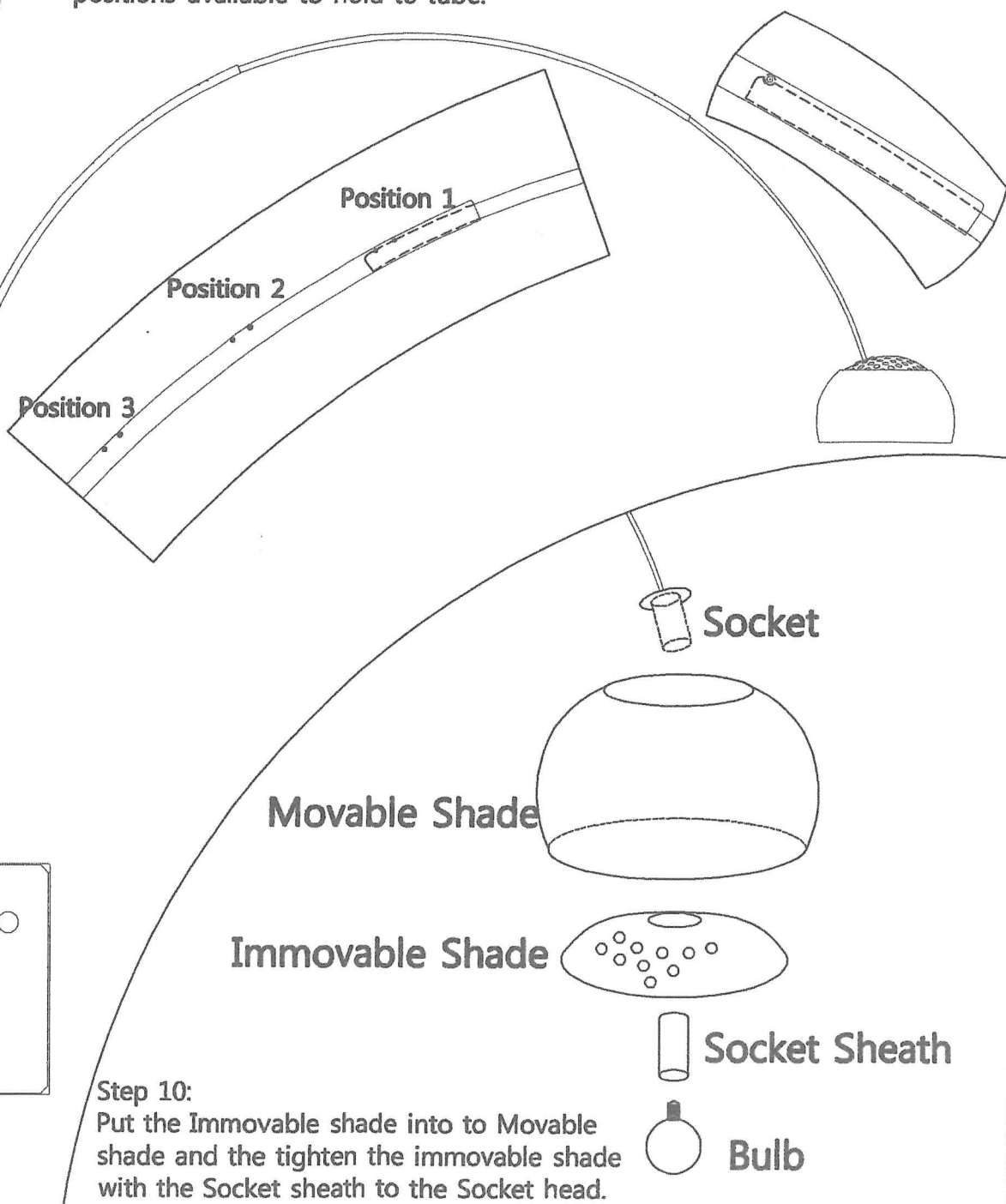
Step 8:

Insert the Medium grooved tube into to Big one , Make sure to fix in 3 positions available to hold to tube.

Step 11:

Arrange the Cord into the grooves after adjust to the right position . And Pull from the bottom outlet of the mainstay tube to make sure the cord laying smoothly in the grooves.

Pull here



Step 10:

Put the Immovable shade into to Movable shade and the tighten the immovable shade with the Socket sheath to the Socket head.