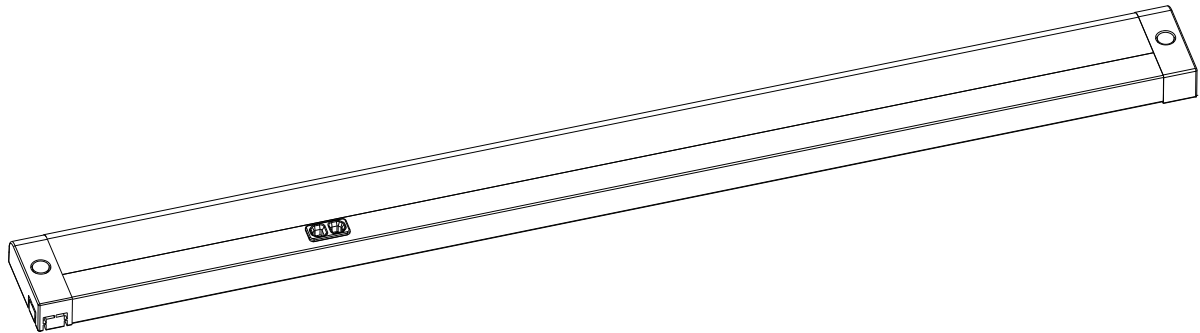


B7231-300 / B7231-600

Overall photos:



L=300/600mm

Applications:



LED show case lighting; LED under counter lighting; LED display case lighting; LED retail product Lighting; LED Furniture Lighting; LED bookcase lighting; LED wardrobe lighting; LED under cabinet lighting; LED kitchen cabinet lighting; LED cove lighting; LED accent lighting; LED task lighting etc.

Product	Specifications
Material	PC
Parts	Screws
Dimensions	33mm (W) x 12mm (H) x300mm/600mm (L)
Light Source:	High brightness SMD2835 LED
Sensor distance	0~5cm
Operating Temperature:	-20°C to 45°C - Indoors
Warranty:	3 years with proper installation
Installation:	2pcs screws allows easy installation
Ingress Protection Grade:	IP20

Technical Operating date:

Technical - Electrical Data	B7231-300	B7231-600
Rated wattage	4W	8W
Luminous Flux		680lm
Rated lamp efficacy	75 lm/W	85 lm/W
Rated Current	0.06A	0.06A
Rated voltage	230VAC	230VAC
Led quantity	30pcs+30pcs	45pcs+45pcs
Angle	113°	113°
Lifespan	20000h	20000h
Length of exposed wire	300mm	300mm

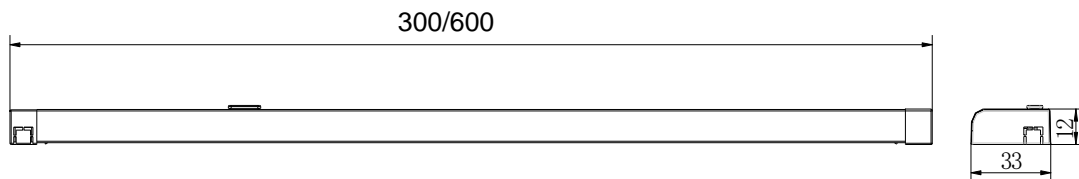
Note: The data listed above is based on CCT of 3000K.

4000K The light efficiency will increase (5~7)%

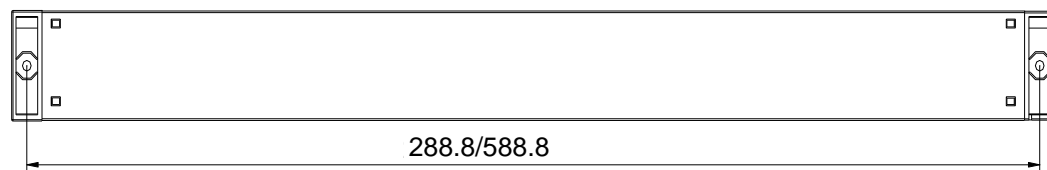
Function description:

1. hand wave: on and off
2. Stay and hold on: Hold on for the first time to adjust the brightness from 0% to 100% for a cycle (there should be a pause of about half a second when adjusting to 100% and 0%); The second hold on of the infinite color adjustment temperature 3000K-4000K cycle (requires a pause of about half a second when adjusting to 3000K and 4000K)
3. The cycle time for adjusting brightness is approximately 8 seconds (100% -0% -100%)
4. There should be no shaking during dimming (dimming frequency 2KHz), and constant power should be saved during color temperature adjustment.
5. The color temperature is 4000K when initial power on, and the LED chips for both color temperature are not.
6. With power outage memory function

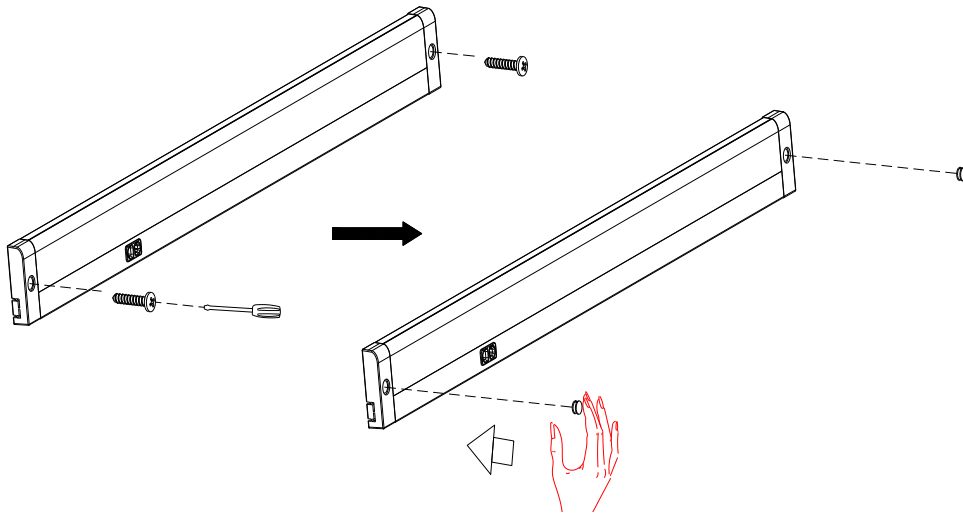
Product size:



Installation size:



Installation information:

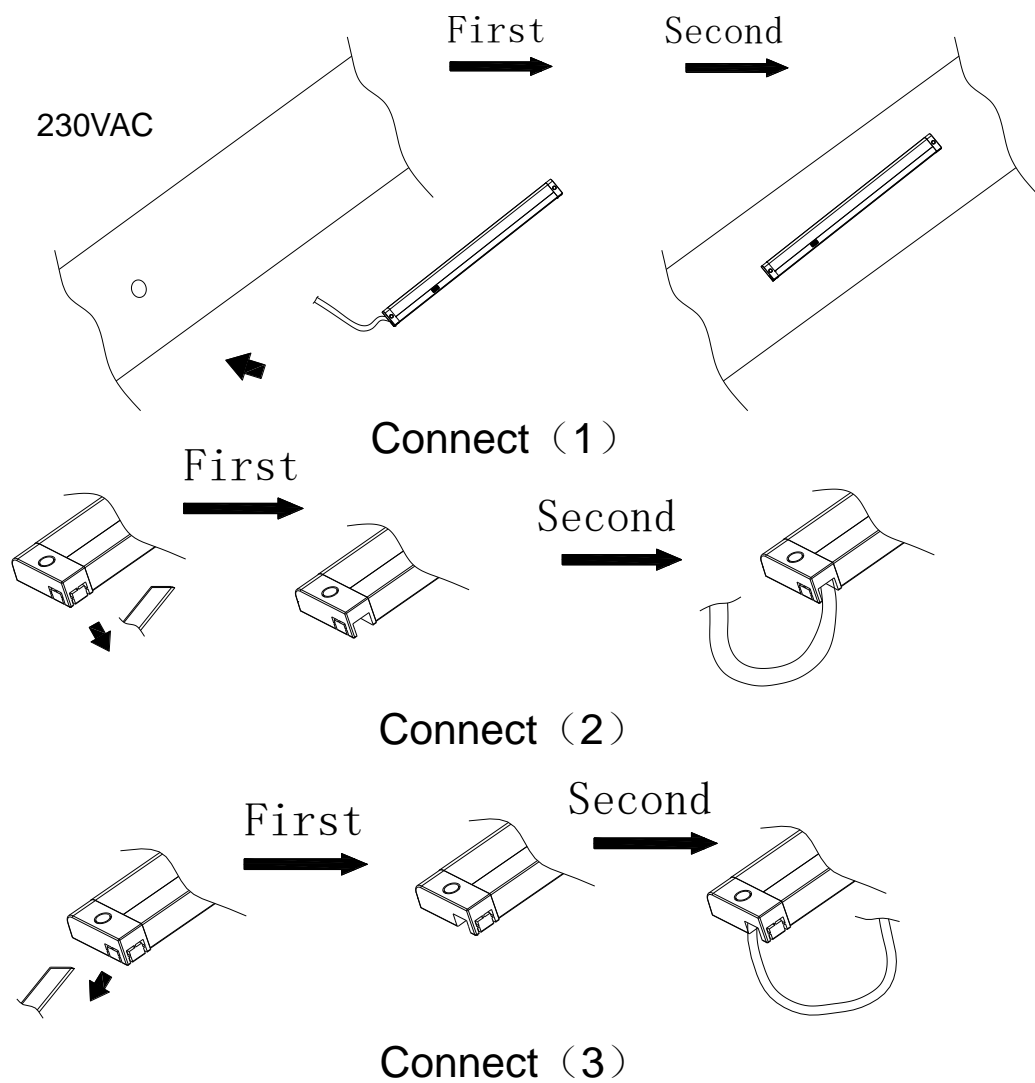


First: open the caps.

Second: install the lights properly.

Third: Cover the caps

Accessories Usage Instruction:



If place the power cable from backside, see connect (1)

If place the power cable from side, see connect (2)

If place the power cable from end, see connect (3)

Accessories (Optional) :



screw