

ST309PA

Light-Control Sensor(Photocell)



Instruction

Welcome to use ST309PA light-control sensor!

The product can turn on or turn off light automatically according to ambient-light. Ambient temperature and humidity can't affect it. It is not only convenient but also practical; it can control the load working only at night. It is used for road light, garden light etc.

SPECIFICATION:

Power source: 220-240V/AC

Power Frequency: 50/60Hz

Rated Current: 10A

Ambient Light: <5-50 LUX (adjustable)

Working Temperature: -20~+40°C

Working Humidity: <93%RH

INSTALLATION:

- Loosen two screws in the bottom and unload the black knob and plastic cover.
- Pass the wire through the black knob and plastic cover and connect the wire as per the Connection-wire diagram. And then install back the black knob and plastic cover.
- Please install the photocell in the correct orientation with the plastic bracket and according to the correct installation place, install the photocell with the enclosed inflated screws. (See the figure on the right).

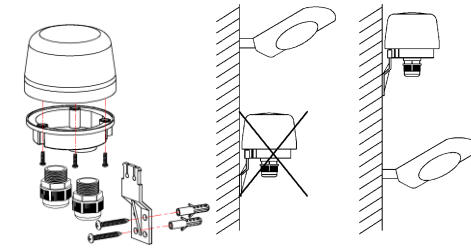
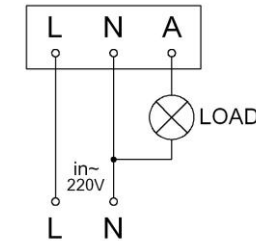


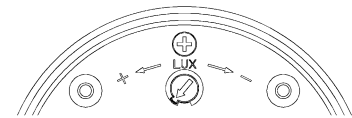
FIGURE INCORRECT CORRECT

CONNECTION-WIRE DIAGRAM:



TEST:

- Slide the LUX knob to position (-) and switch on the power.
- When you test in daytime. You should cover a black opaque cloth on the product.
- When the cloth mantles the detection window of the photocell, the ambient light of the photocell is less than 5 LUX, the lamp will be on.
- When you take off this cloth, the lamp will be off automatically.
- When you slide the LUX knob to position (+), the lamp could be on in the ambient light less than 50LUX.



NOTE:

- In front of the photocell, it should be no obstruction affecting to accept natural light;
- In front of the photocell, it should be no swaying object.
- Don't install the photocell under the light or in the place where the light will be irradiated to the photocell.