

Product Name : WIFI Phantom Color RGBW Controller

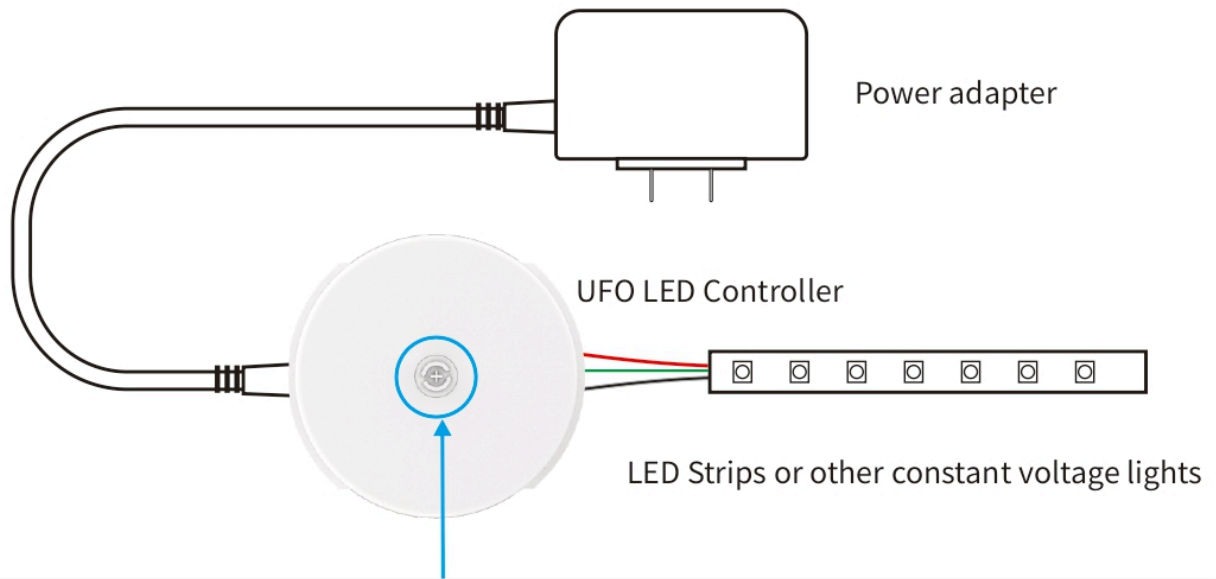
WIFI Phantom Color RGB Controller



I: Product Parameter:

Category	LED Controller
Domination Principle	WIFI
APP	Surplife
Language	Chinese
Channel	Android 7.0/IOS 12.0 or higher
Input Voltage	Single control signal
Maximum Power	DC12-48V
Support Driver IC	12V:120W,24V:240W,48V:480W SPI:Common RGB,WS2812B,SM16703,SM16704, WS2811,UCS1903,SK6812,INK1003,UCS2904B SPI:Common RGBW,RGBW-TM1814, CommonRGBCW,RGBCW-2805
Operating Temperature	-20~+55°C
Effective Control Distance	WIFI visual distance 40m
Product Weight	45g
Dimension	70MM*65MM*24MM

II: Wire Connection

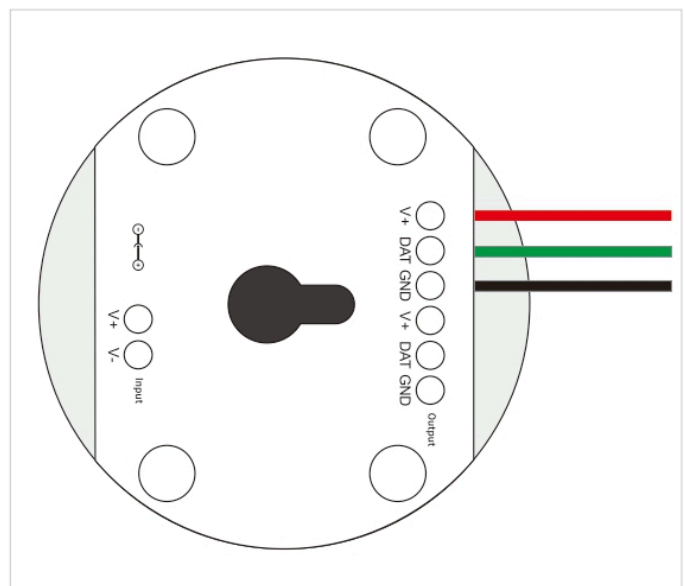


Short press: Turn on or transfer the Built-in modes

Long press: Hold on 3 seconds-turn off Hold on 8 seconds-restore factory Settings



The connection between the controller and the power supply



Controller and device connection

III. Download Surplife APP

Download “Surplife” APP from Apple Store and Google Play Store, or scan the QR code.

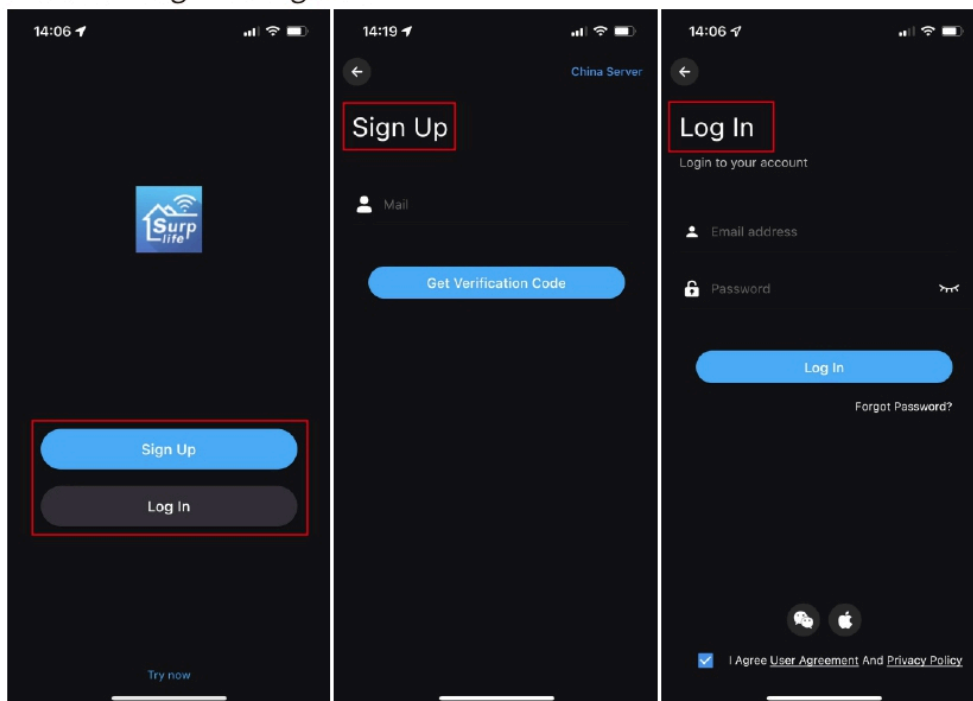


Surplife APP



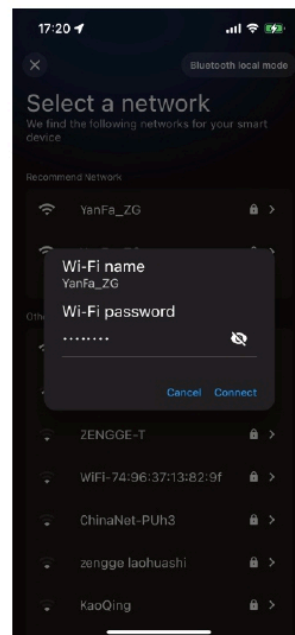
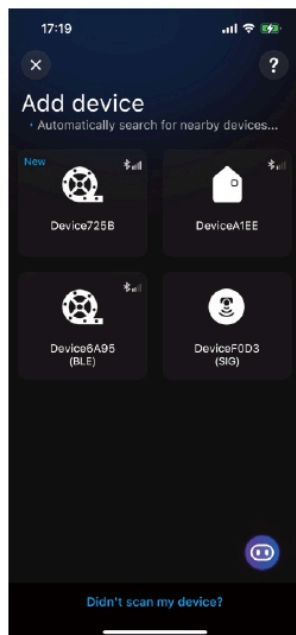
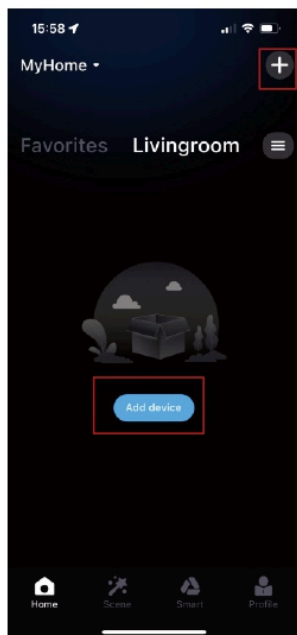
IV. How to connect the controller to Wi-Fi network?

- 1) Register/Login your Surplife account.
- 2) You can log in as a guest.

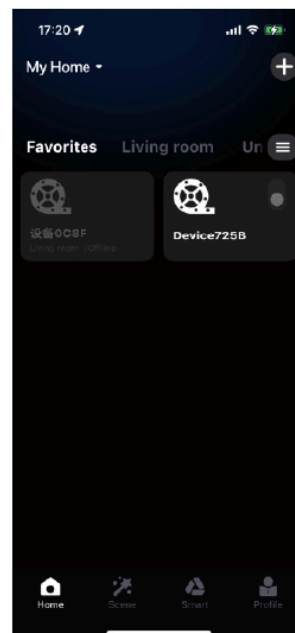
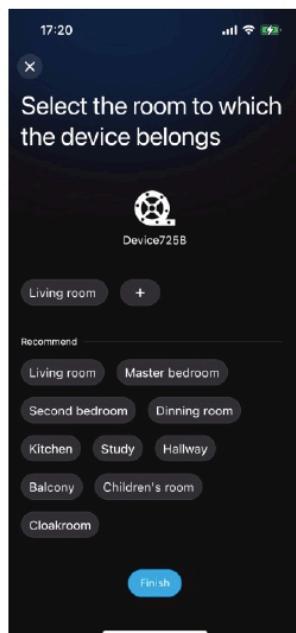
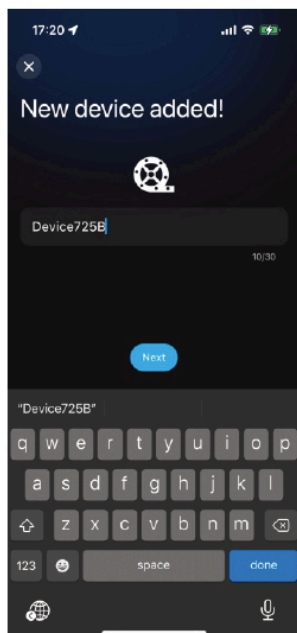


- 3) Open your phone Bluetooth, turn on the device.

4) Enter “surplife” app, click “Add Device” or click “+” to add a device. Then select your Wi-Fi network (only for 2.4Ghz network) and enter the password.



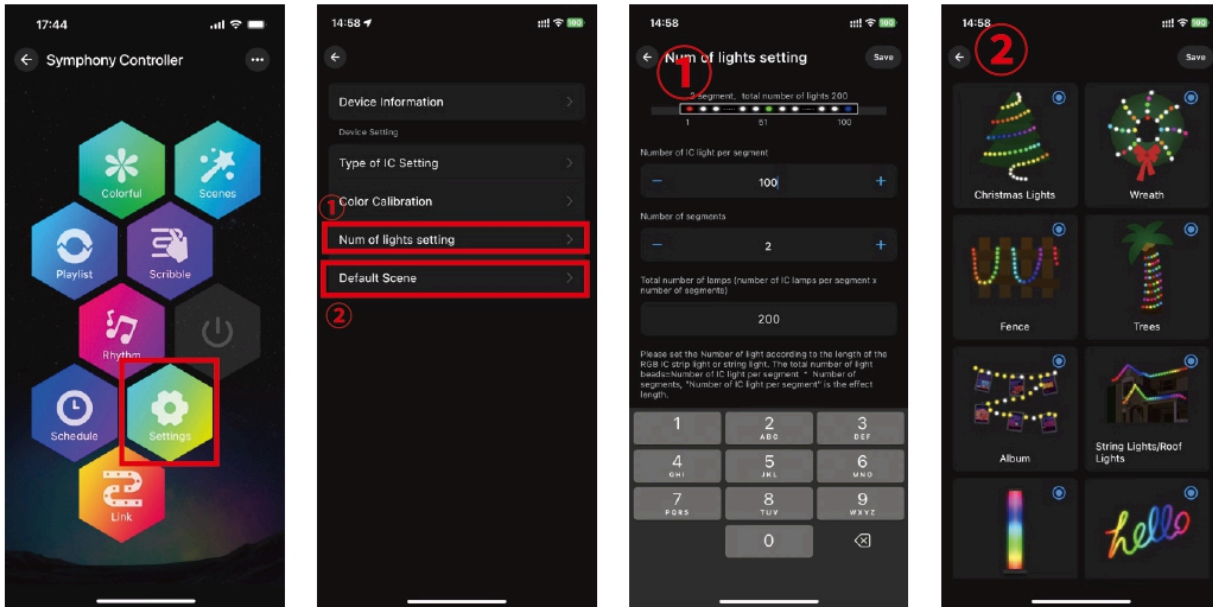
5) Rename the device and select a room for it.



V.About Settings:

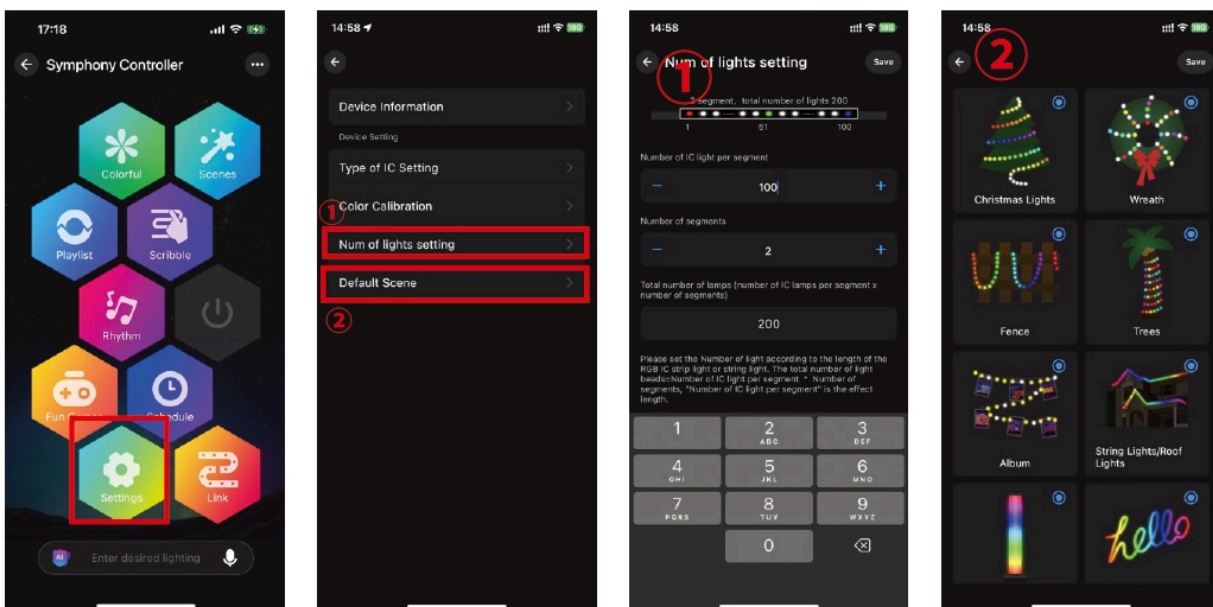
WIFI Phantom RGBW Controller UFO Model Voice-activated Pushbutton Version (12S)(12-48V)

Click the “Setting” icon to enter the setting interface, you can set the chip type, color calibration, and number of lights for the controlled device (the number of lights in each section can not be greater than 500, and the total number of points can not be greater than 2048), and the setting of ic points should be applied in the smearing function. And the scenario type is selected according to the controlled lights.



WIFI Phantom Controller UFO Model All-in-One Voice-activated Pushbutton Version (BL-M5)(12-48V)

Click the “Setting” icon to enter the setting interface, you can set the chip type, color calibration, and number of lights for the controlled device (the number of lights in each section can not be greater than 500, and the total number of points can not be greater than 2048), and the setting of ic points should be applied in the smearing function. And the scenario type is selected according to the controlled lights.

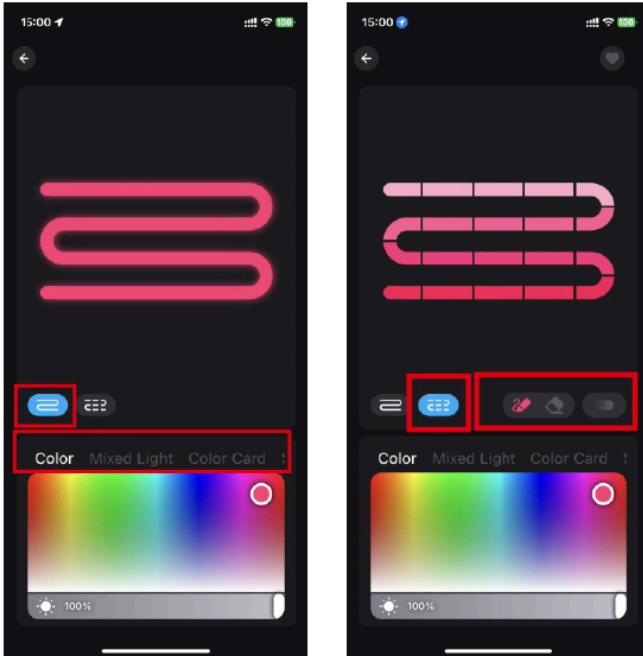


VI. Detailed introduction of APP functions:

1). Colorful Features

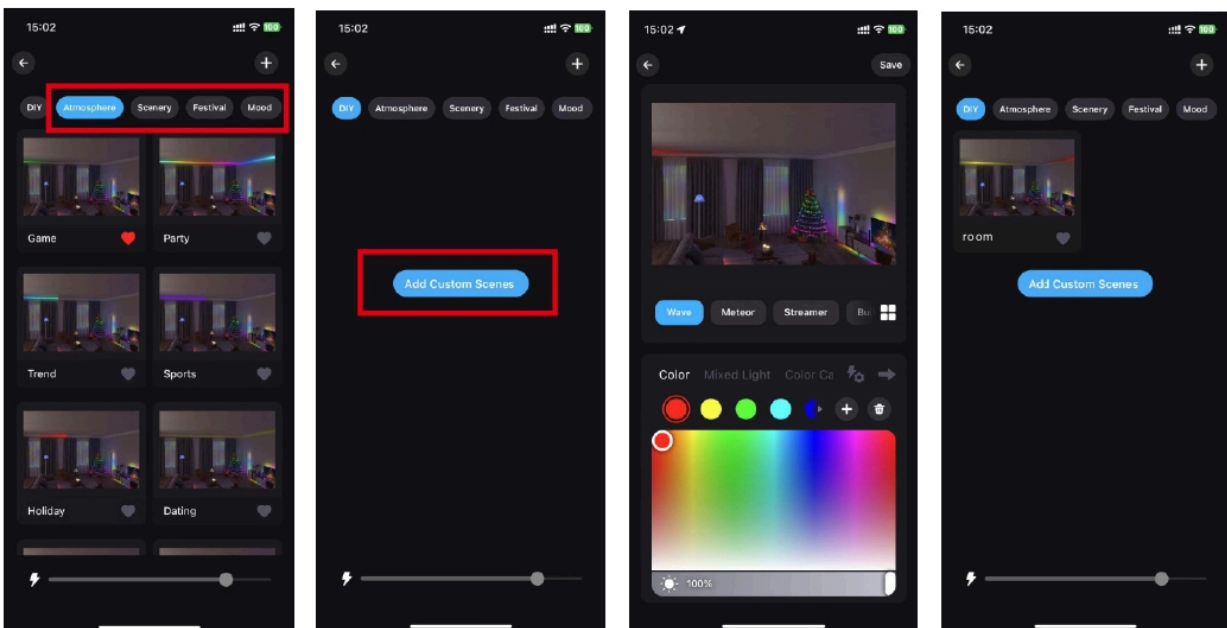
The light color adjustment is divided into whole section and subsection, providing different columns for color selection or editing, and adjustable brightness.

In the sub-section interface, you can paint or erase the color of the sub-section at will, and you can also set the gradient effect.



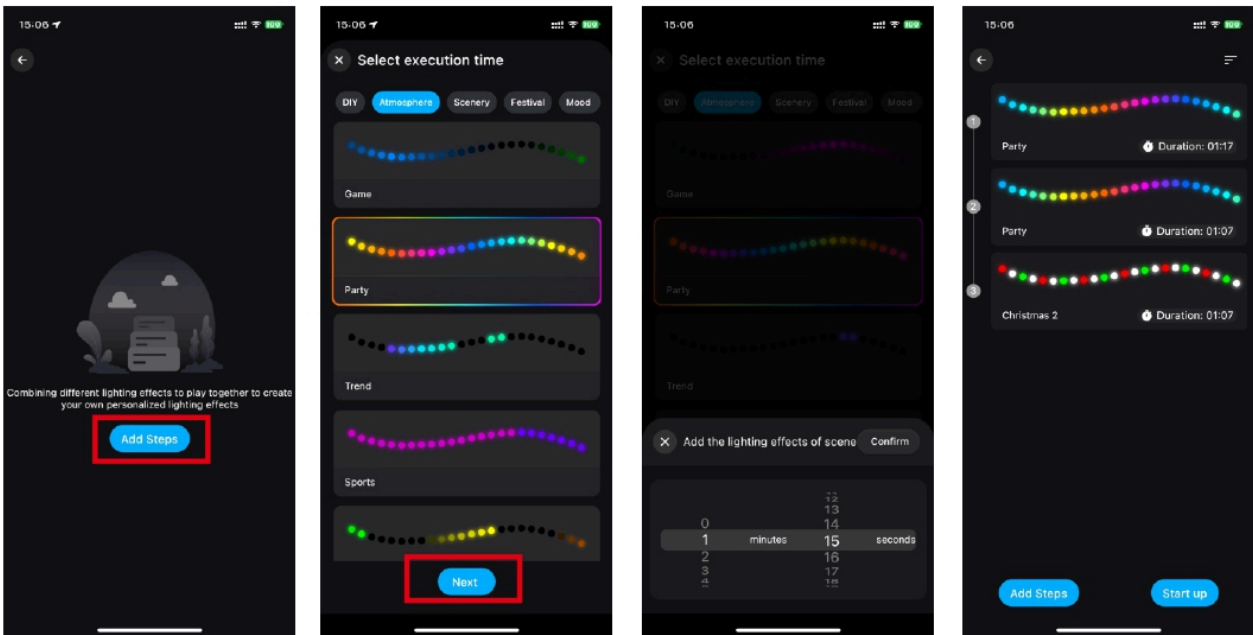
2) Scene settings

Built-in four categories of life, landscape, holiday, mood, and four categories of scenarios to choose the light effect, and can click “DIY” or “Favorites” to add new customized scenarios.



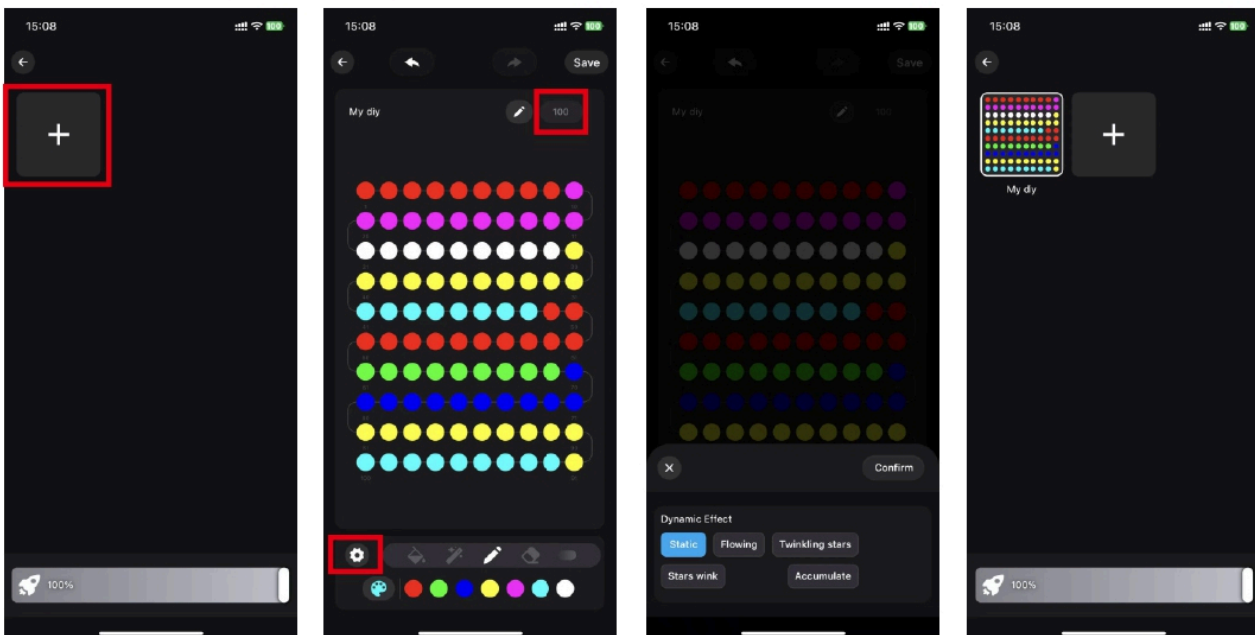
3) Rotation function

Select lighting effects for different categories of scenarios and set the duration of the lighting effects. Combine different lighting effects for sequential playback.



4) Applicator function

Click the “+” sign, you can custom edit the light color and dynamic effects, click save after setting. (Before DIY, make sure the number of lights and equipment to keep the same, otherwise the lighting effect is incomplete, please edit the number of ic lights in the “Settings” function)

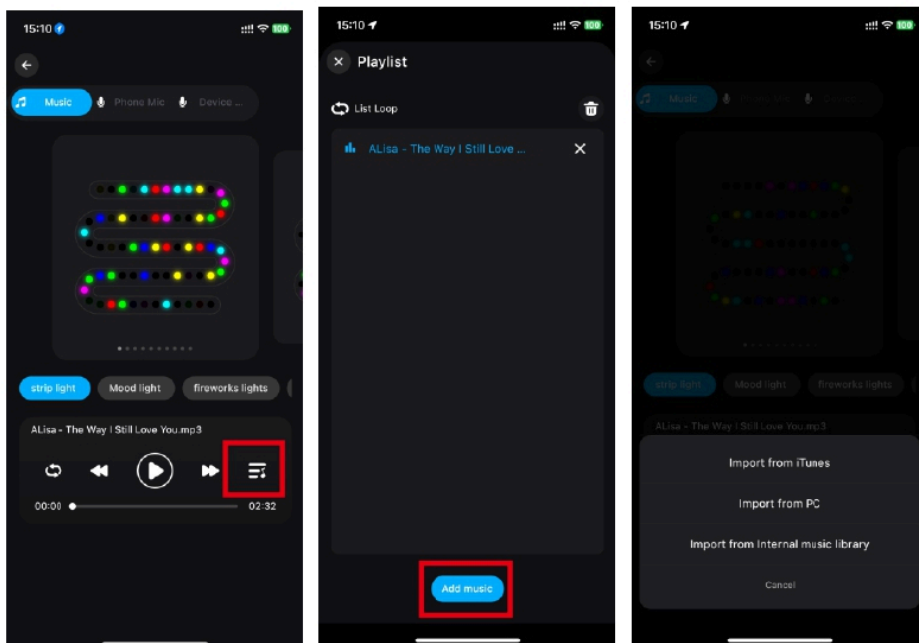


5). Rhythmic function

①**Music mode:** the light jumps and changes according to the music.

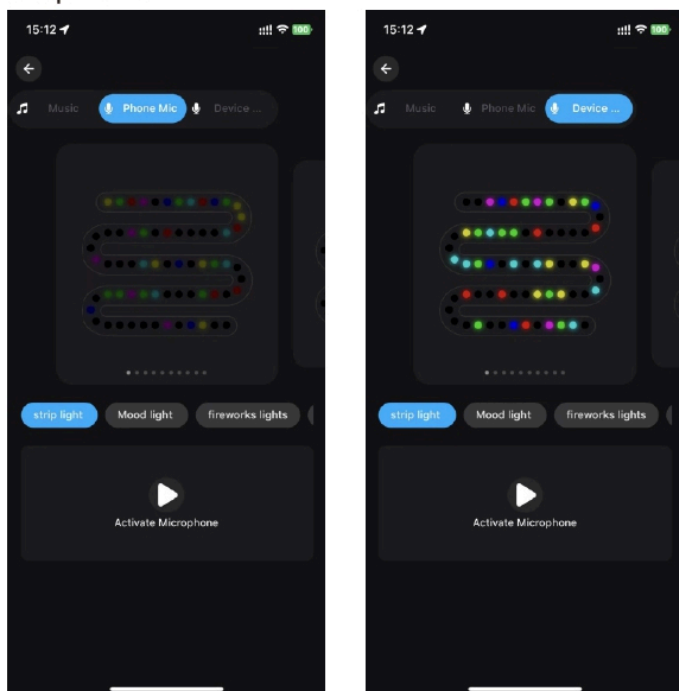
Click “Add Music” to import music files or import from built-in music library.

Note: For IOS, you need to download music files from iTunes or follow the instructions to import music from a PC; for Android, you need to download music files to your cell phone.



②**Microphone**

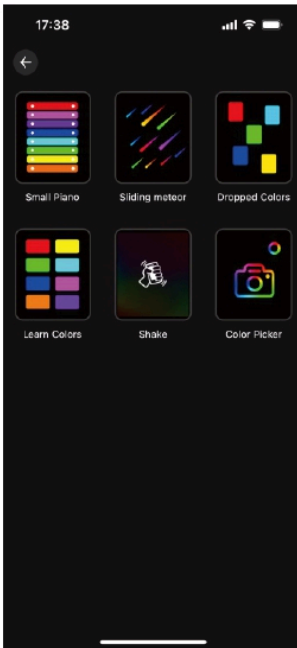
Cell phone microphone or device microphone function (voice-activated version only) that converts light effects to different rhythms based on signals received by the microphone.



6). Fun Features

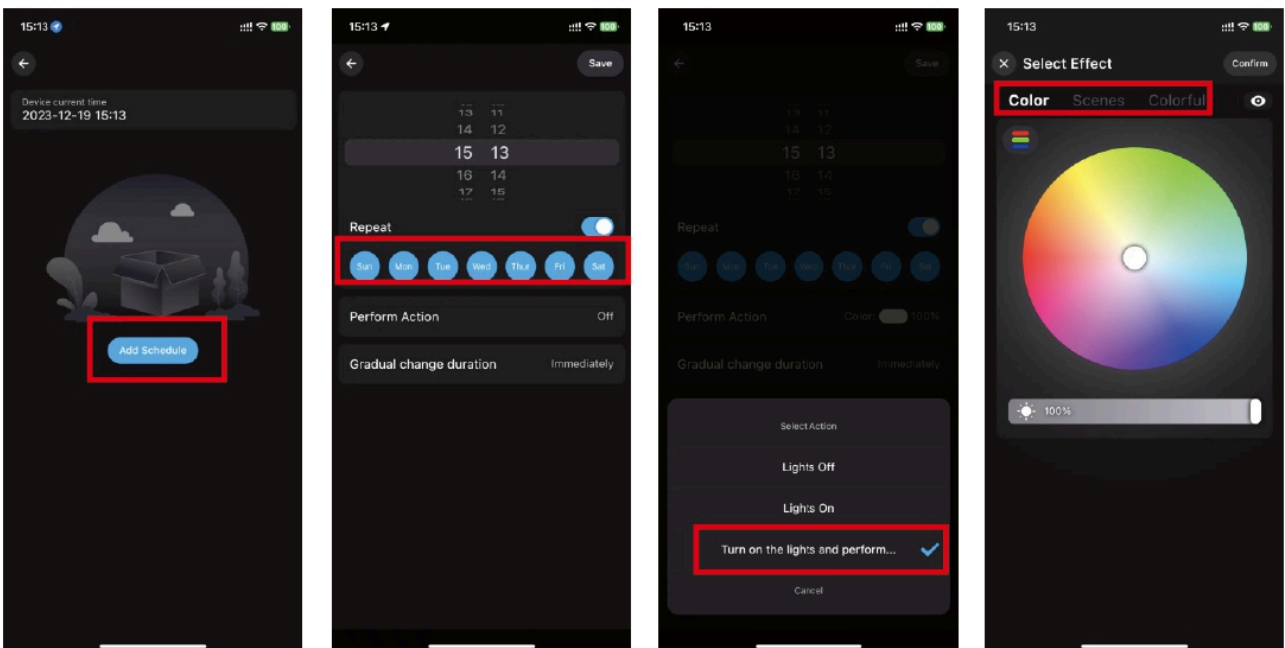
WiFi Phantom Controller UFO Model All-in-One Voice-activated Pushbutton Version (BL-M5)(12-48V)

Access the Fun Play feature to your liking and enjoy the lighted mini-games.



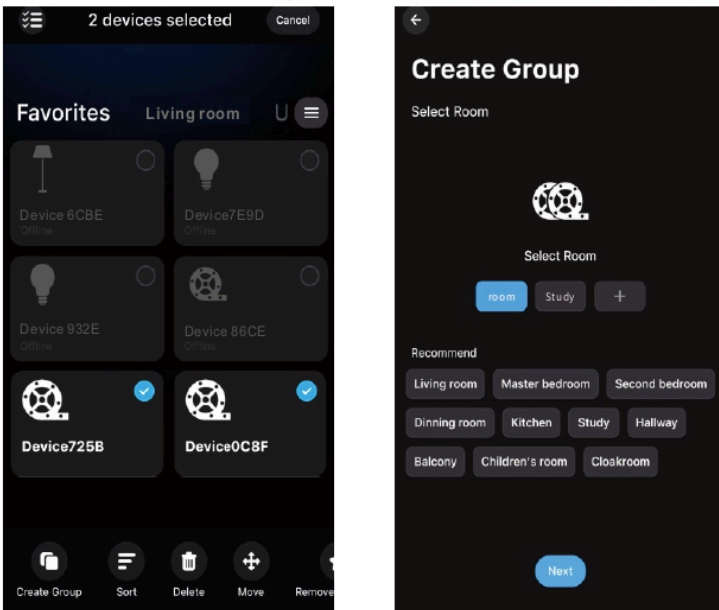
7). Timer function

- Set the on/off settings for the light fixtures it controls according to the time you set.
- When executing the light on, you can freely choose different lighting effects in colorful or scenarios.



8). Group Control Function

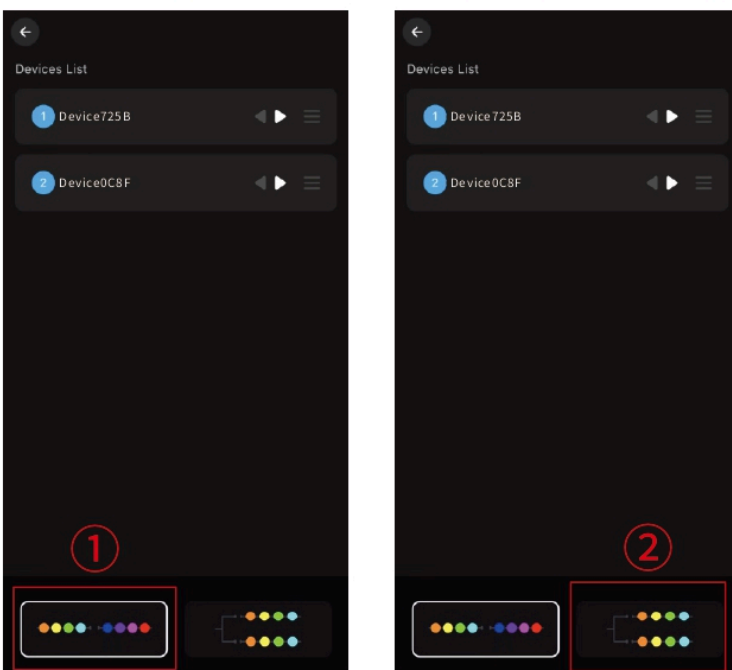
By grouping multiple controllers into the same group, you can simultaneously perform one-touch dimming, color control, and on/off control of the devices in the group.



9). Linkage Function

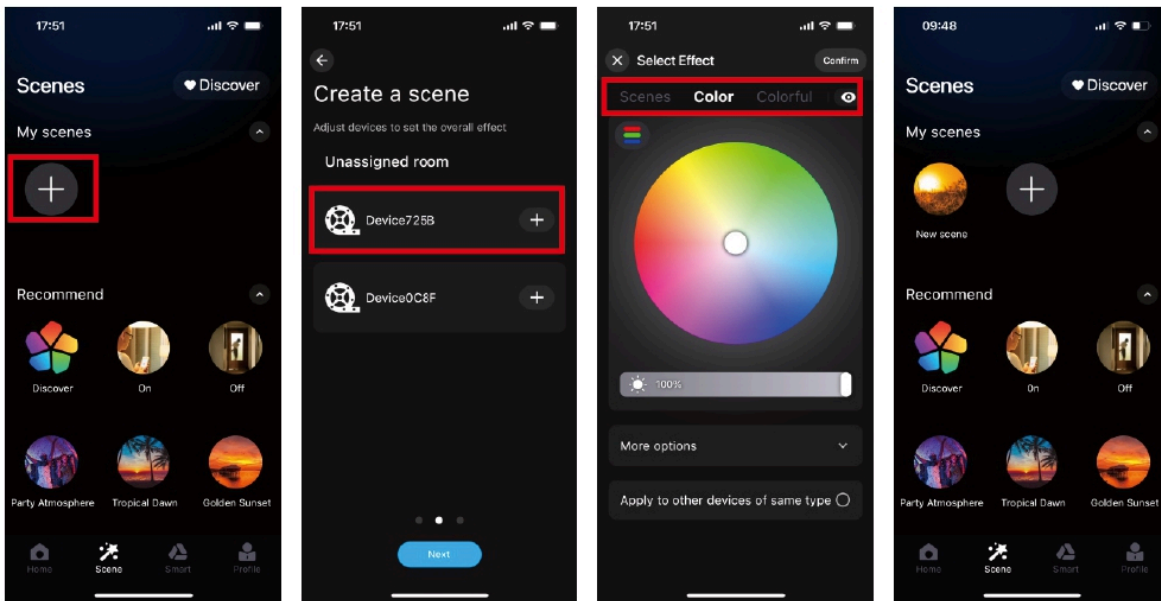
Group the lights into the same group, you can link multiple lights to experience the APP function. Long press and drag the order of light fixtures in the device list, you can also change the direction of light.

- ① Serial linkage: the lights in the group are linked in sequence.
- ② Parallel: synchronized linking of lights in the group.



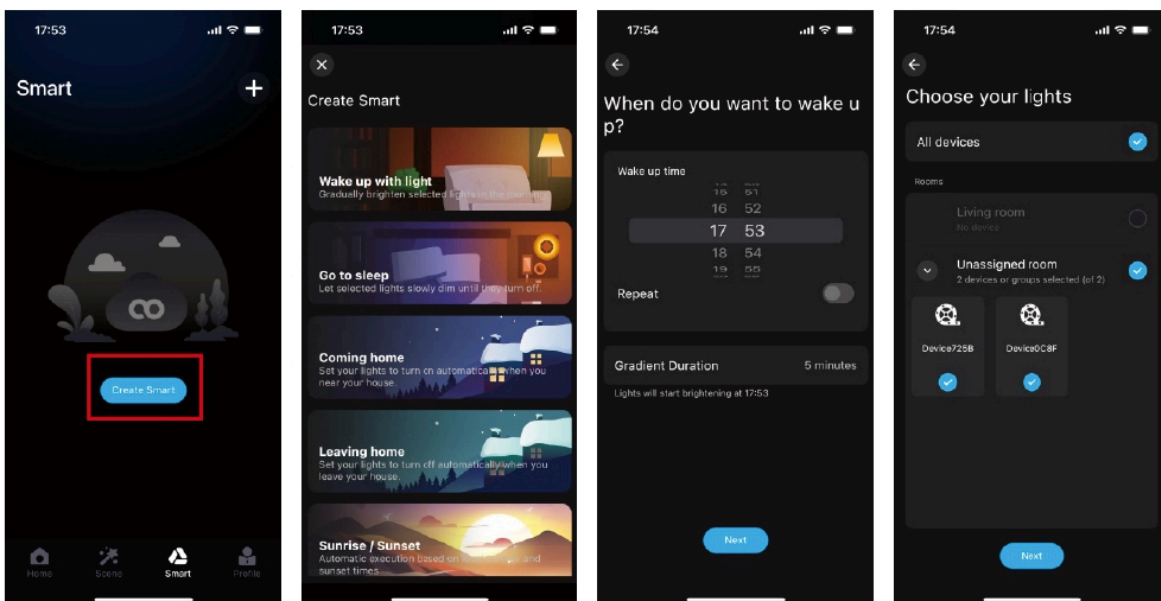
10) Scene function

In the scene interface, according to personal needs to create different scenes of light color or dynamic effects. (Note: You can apply “widgets” and “Siri shortcuts”)



11) Create Smart

In the smart interface, create different smart scenes according to your personal needs, such as wake up/sleep, leave home/come home, sunrise/sunset, or give DIY customization to the device and scene.

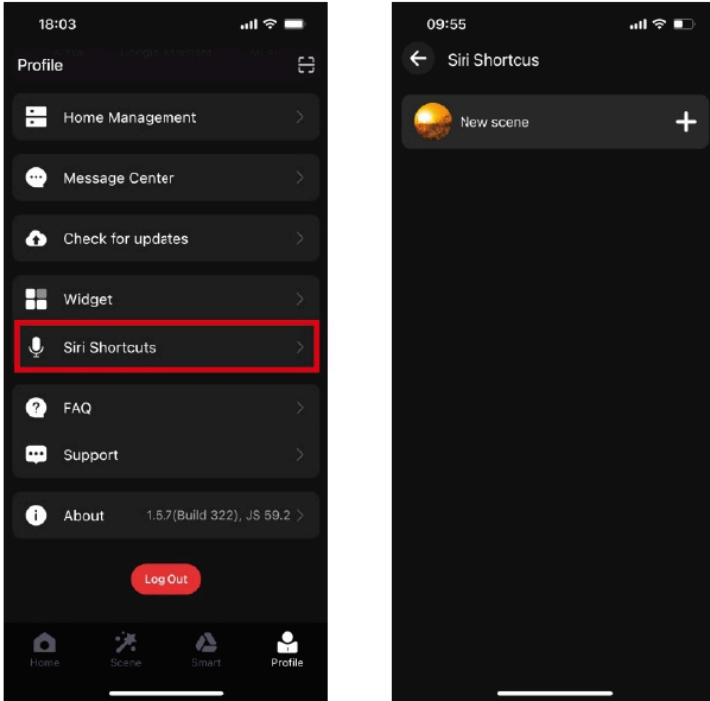


12) Siri Shortcut - IOS

Notes

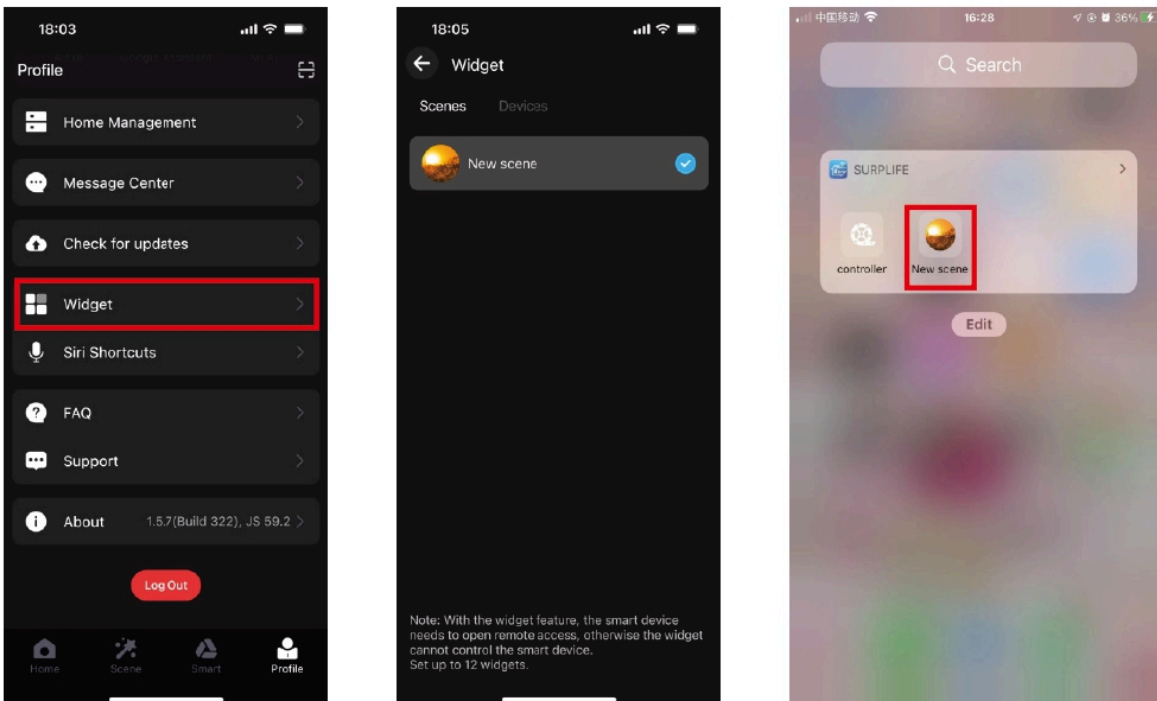
1.Siri can only control the scene (set the scene function in advance).2.IOS 12.0 and above system comes with shortcut function. 3.Please make sure your device is “Online Cloud”.

Go to the page “My” > click “Siri Shortcut” > add the scene here.



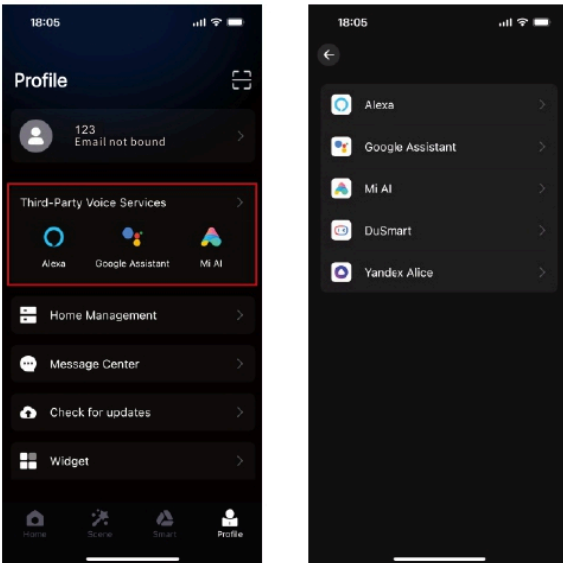
13) Steps to add widgets (set up scene functions in advance)

Go to “My” > click “Widgets” > add the scene to the widget.



14) Voice Function

In the “My” page, you can select the third-party voice service platform (Alexa, Google Home, etc.), connect the device according to the guidelines, and then turn on the voice control when the connection is successful, which is convenient and quick.



Tip

- 1) Please use the product in a dry environment;
- 2) Input voltage should be 12-48V DC, do not use 220V AC directly;
- 3) The product is anode connection do not connect the wrong way, wrong connection easily lead to product failure.